



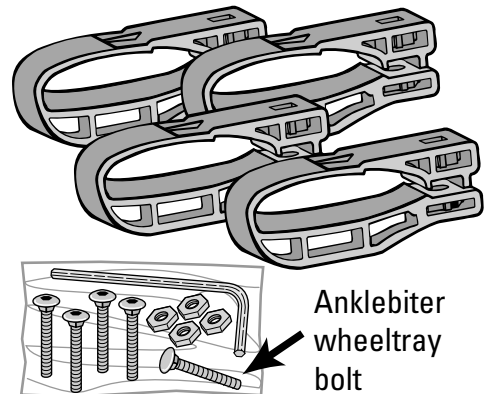
GENUINE PARTS

INSTALLATION INSTRUCTIONS

1. **DESCRIPTION:** MIGHTY MOUNT HORIZONTAL
2. **APPLICATION:** Refer to the Dealer Accessory Chart for specific vehicle application.
3. **PART NUMBER:** 999R1 EV004

4. **KIT CONTENTS:**

ITEM NO.	QTY	DESCRIPTION
1)	4	Horizontal Mighty Mount
2)	1	Instructions Replacement Template
3)	4	Screws
4)	4	Nuts
5)	1	Wrench
6)	1	Anklebiter wheeltray bolt



5. **TOOLS REQUIRED:** NONE

6. **INSTALLATION PRECAUTIONS / NOTES:**

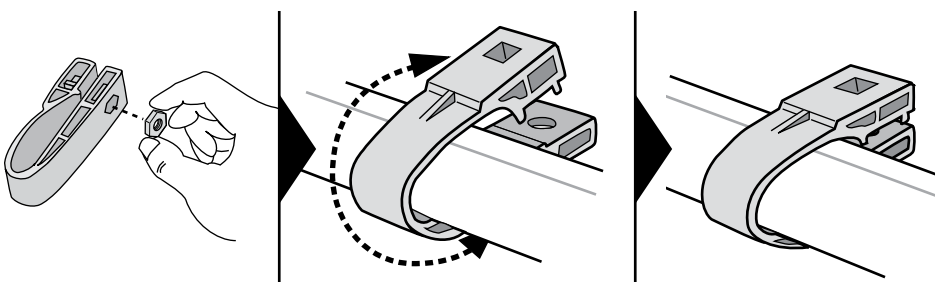
⚠ WARNING

- DO NOT exceed the recommended weight limits of your roof rack.
- Follow accessory instructions and use this reference sheet to attach your accessory to these Mighty Mounts.

NOTE

Mighty mounts wrap around factory installed racks. Follow accessory instructions and use this reference sheet to attach your accessory to these Mighty Mounts.

7. **INSTALLATION PROCEDURE**



- 1) Press the nuts firmly into each of the Mighty Mounts. (Bikes: Do not press the nuts into the Mighty Mount at rear of wheel tray.)
- 2) Pull Mighty Mounts apart and attach two onto each crossbar.