



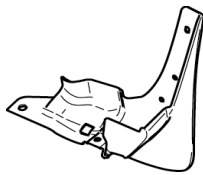
GENUINE PARTS

INSTALLATION INSTRUCTIONS

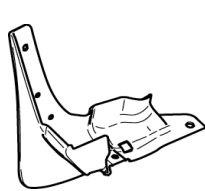
DESCRIPTION: SPLASH GUARD KIT
APPLICATION: MURANO Convertible (2011)
PART NUMBER: F38E0 1GR0A

KIT CONTENTS:

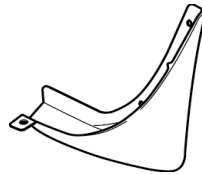
Item	Qty.	Part Description	Service Part Number
A	1	Splash Guard - Front Right	63854 1GR0A
B	1	Splash Guard - Front Left	63855 1GR0A
C	1	Splash Guard - Rear Right	78812 1GR0A
D	1	Splash Guard - Rear Left	78813 1GR0A
E	6	Tapping Screw - Torx T20	14-54 N5061
F	6	Spring Nut	12-41 01011
G	1	Installation Instruction Replacement Template	---



A



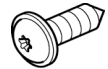
B



C



D



E



F



G

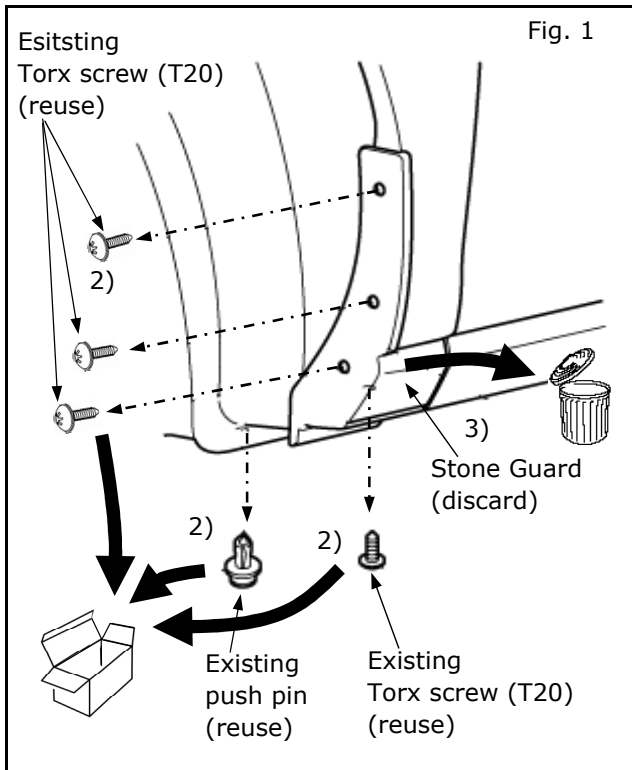
TOOLS REQUIRED:

- Clean, lint-free wiping cloth
- Drill
- 3 mm (1/8"), 6 mm (1/4") Drill bit
- Mild soap/water mixture
- Torx screwdriver(T20)
- Clip Remover

PRE-INSTALLATION WARNINGS, CAUTIONS, CRITICAL STEPS, and NOTES:

- Dealer Installation Recommended. Instructions may refer to Service Manual.
- These instructions are for the left side of the vehicle; the same procedure applies to the right side.

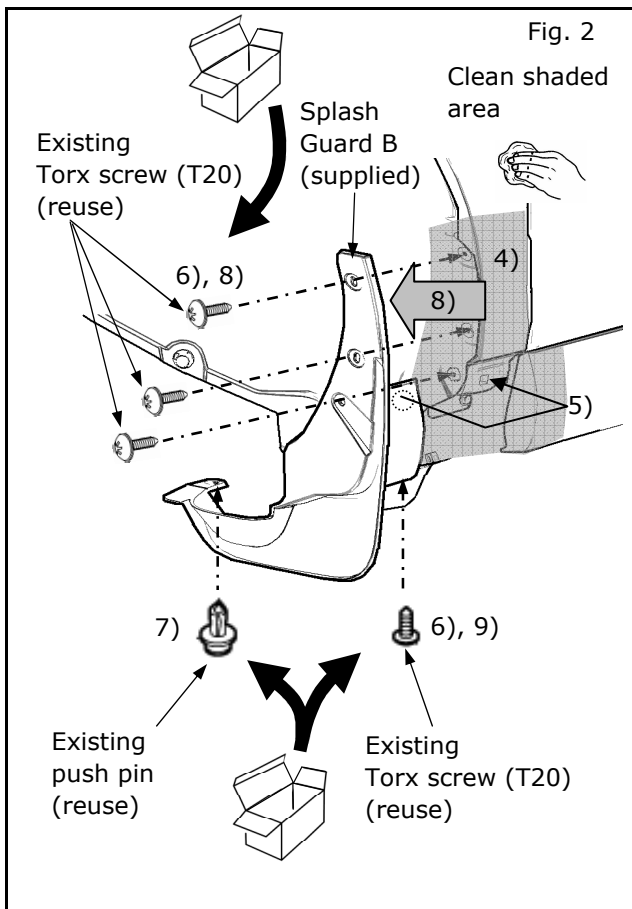
INSTALLATION PROCEDURE:



- 1) Turn the tire to the left.
- 2) Remove torx screws and push pin, keep to reuse.
- 3) Remove existing stone guard and discard.

NOTE:

If stone guard clip remains in front fender, reach behind wheel liner and squeeze clip to remove.



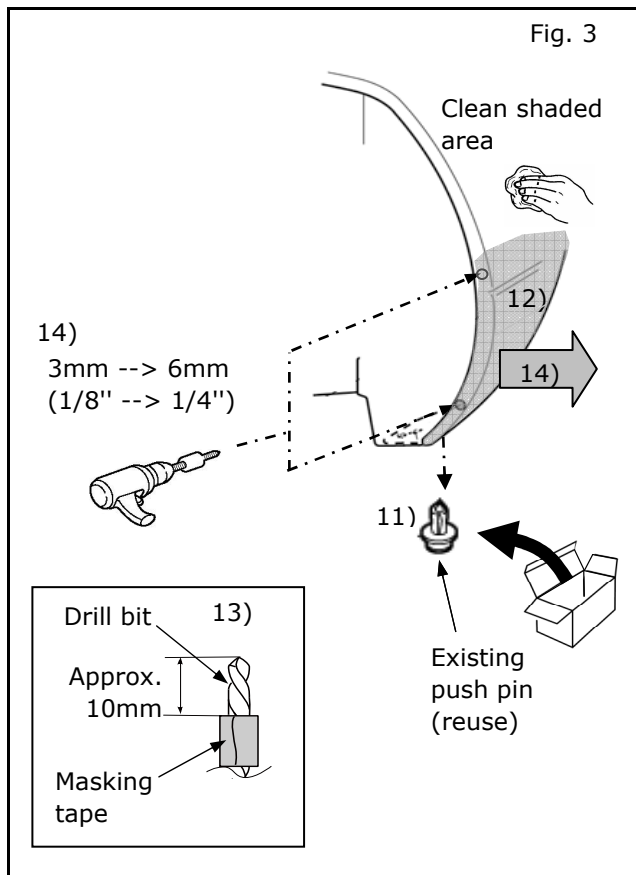
- 4) Clean installation surface (shaded area) with mild soap/water mixture.
- 5) Align splash guard to vehicle and install clip to Fender.
- 6) Loosely reinstall torx screws (T20) (Reuse) in wheel house and underneath vehicle.
- 7) Reinstall install push pin underneath vehicle.
- 8) Push splash guard inward and tighten torx screws (T20) (Reuse) in front wheelhouse.

NOTE:

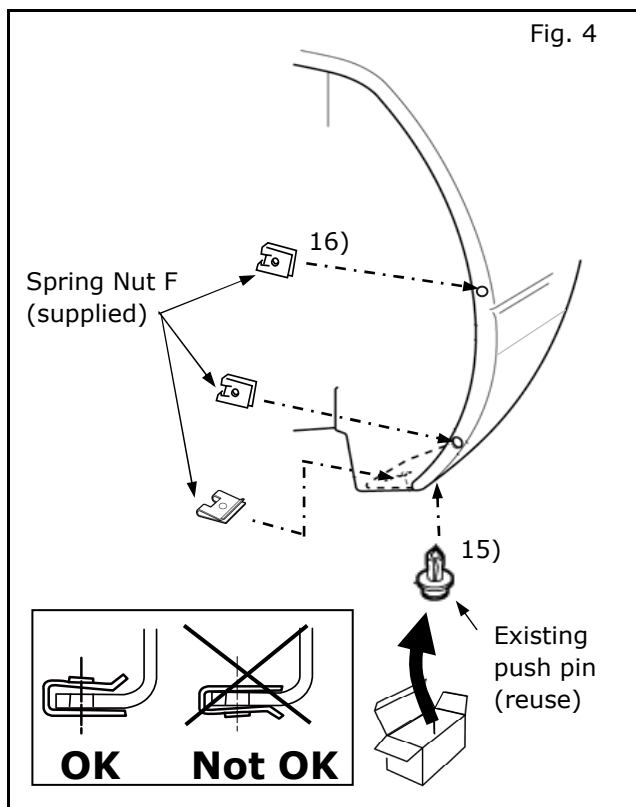
- **Hold Splash Guard tight to vehicle while tightening screws to ensure no gap occurs between Fender and Splash Guard.**
- **Do not over tighten screws. Reference Tighten Torque: 3.8~4.4 N-m {34~39 in-lb}**

- 9) Tighten torx screw(T20) (Reuse) underneath vehicle.
- 10) Repeat steps for passenger side.

INSTALLATION PROCEDURE:



- 11) Remove push pin and keep to reuse.
- 12) Clean installation surface (shaded area) with mild soap/water mixture.
- 13) Wrap masking tape around 3 mm (1/8") and 6 mm (1/4") drill bit , approximately 10 mm from the tip.
- 14) Pull rear bumper outward and drill 3mm (1/8") → 6 mm (1/4") holes at center of each location (2 locations).

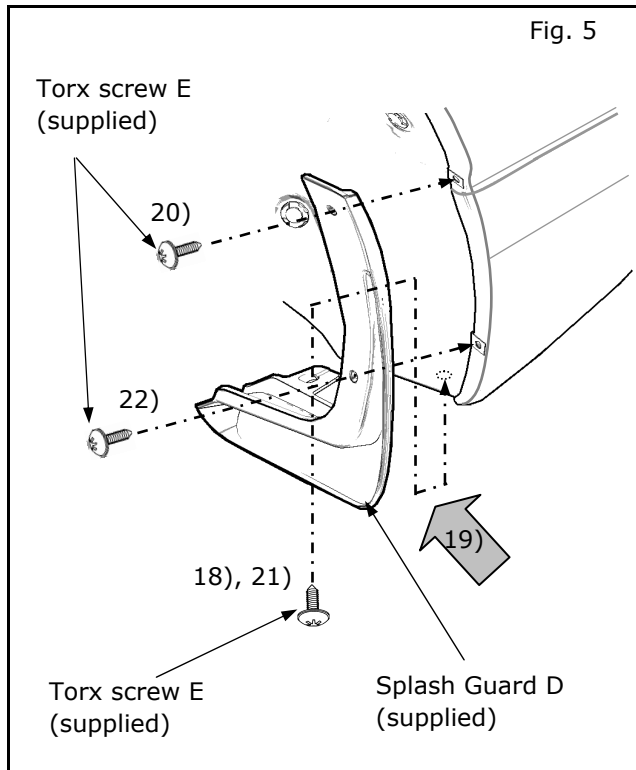


- 15) Reinstall push pin (reuse) underneath vehicle.
- 16) Install spring nut F (supplied) over holes in rear bumper wheelhouse area and underneath vehicle.

NOTE:

Install Spring nuts (supplied) with flat edge on out side and down side of rear bumper.

INSTALLATION PROCEDURE:



- 17) Align splash guard to vehicle.
- 18) Loosely install Torx screw E (supplied) underneath vehicle.
- 19) Push splash guard inward and upward.

NOTE:

- **Hold Splash Guard tight to vehicle while tightening screws to ensure no gap occurs between rear bumper and Splash Guard.**
- **Do not over tighten screws.**
Reference Tighten Torque: 3.8~4.4 N-m {34~39 in-lb}

- 20) Install and tighten upper Torx screws E (supplied) in rear wheelhouse.
- 21) Tighten rear Torx screw E (supplied) underneath vehicle.
- 22) Install and tighten lower Torx screw E (supplied) in rear wheelhouse.
- 23) Repeat steps for passenger side.

FINAL INSPECTION:

- Verify all clips are fully engaged and locked.
- Check all **torque** values. (Reference related steps and figures)
- Re-install all removed vehicle parts. Refer to the vehicle service manual for more details.