



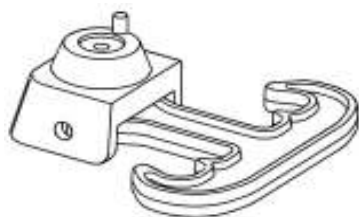
GENUINE PARTS

INSTALLATION INSTRUCTIONS

DESCRIPTION:	Shopping Bag Hook
APPLICATION:	Altima
PART NUMBER:	999C2 J2003

KIT CONTENTS:

Item	Qty.	Part Description
A	2	Shopping Bag Hook
B	2	Phillips Head Screw #6-32 x 1"
C	2	Hex Head Screw #6-32 x 1"
D	2	Jack Nut #6-32
E	2	Jack Nut Friction Wrench
F	1	Installation Instruction Replacement Template



A



B



C



D



E



F

TOOLS REQUIRED:

- Phillips Screw Driver
- 1/4" Socket
- Drop Cloth
- Torque Wrench
- 3/16", 1/4" & 21/64" HSS drill bits
- Cordless Drill
- Center Punch
- Hammer
- Scissors
- Tape
- Front/Backside Hand Deburring Tool
- File

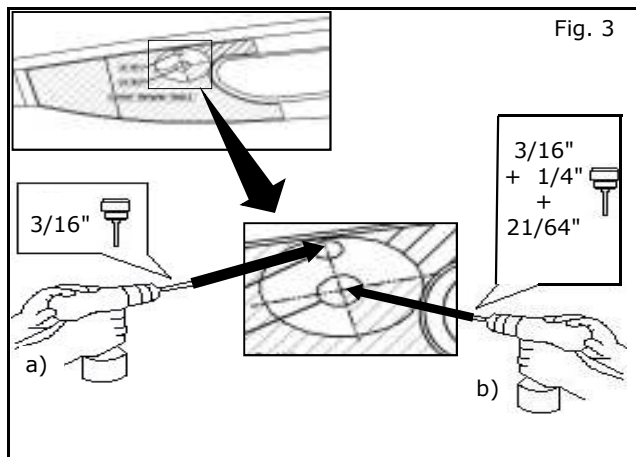
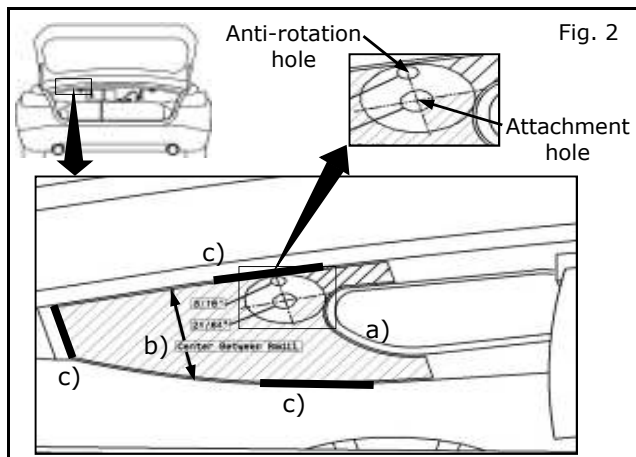
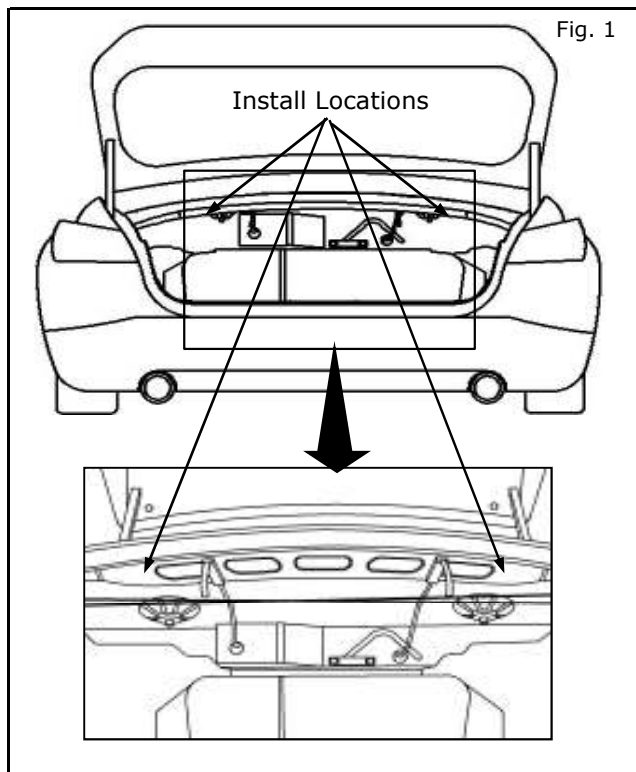
⚠ WARNING

- Each Shopping Bag Hook is designed to transport normal cargo contents. Flammable or dangerous materials should not be transported in your vehicle at any time.
- Do not exceed the recommended load of 15 lbs per Shopping Bag Hook.
- Do not use pilot point drill bits during installation process. These drill bits can leave large burrs and cause enlarged holes. Use HSS drill bits made for drilling steel only.

⚠ CAUTION

- Do not overtighten the Hex Head Screw. Maximum torque range is 1.6 to 1.7Nm (14 to 15inlbs).

INSTALLATION PROCEDURE:



1) Go to Page 5, make sure drill template is printed to scale and cut out Driver Side Drill Template.

2) Place a drop cloth in trunk to catch metal shavings.

3) Align Drill Template (Driver Side).

- Align inboard edge with radius tangent of rounded sheet metal cutout.
- Center drill template between forward and rearward metal tangent radii.
- Tape template to sheet metal.
- Mark center of attachment hole and anti-rotation hole with center punch/hammer.

Note:

Do not use pilot point drill bits. Use HSS bits for drilling steel only.

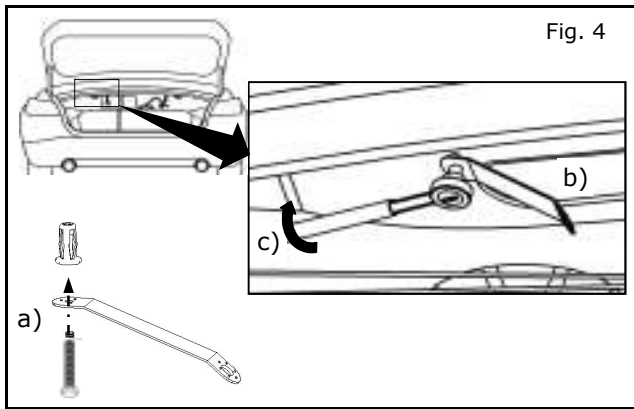
4) Drill anti-rotation and attachment holes.

- Using a 3/16" drill bit, drill anti-rotation hole.
- Using a 3/16" drill bit, pre-drill attachment hole then re-drill using 1/4" and 21/64" drill bits.

5) Remove template and remove any burrs around both holes using hand deburring tool or file if necessary.

6) Remove metal shavings from trunk floor.

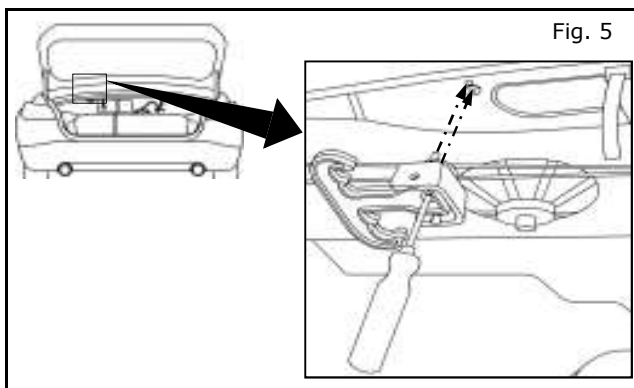
INSTALLATION PROCEDURE:



- 7) Attach Jack Nut to package shelf.
 - a) Feed hex head screw through small hole in jack nut friction wrench and thread (hand tight) into jack nut.
 - b) Insert jack nut/screw assembly into attachment hole, keeping jack nut firmly pressed against sheet metal.
 - c) Use 1/4" socket with the torque wrench and tighten hex head screw in until jack nut is fully collapsed at a maximum between 1.6 to 1.7Nm (14 to 15inlb).

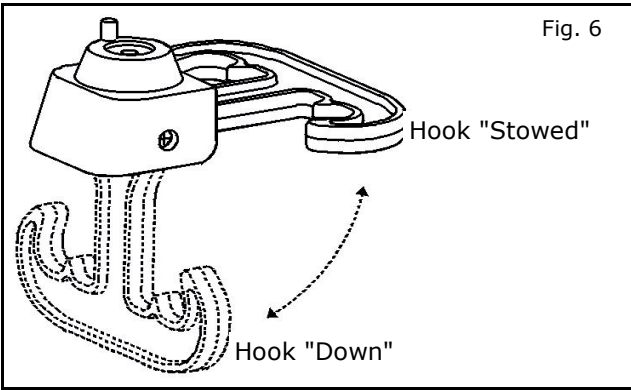
⚠ CAUTION

- **Do not overtighten the Hex Head Screw. Maximum torque is 1.6 to 1.7Nm (14 to 15inlb).**

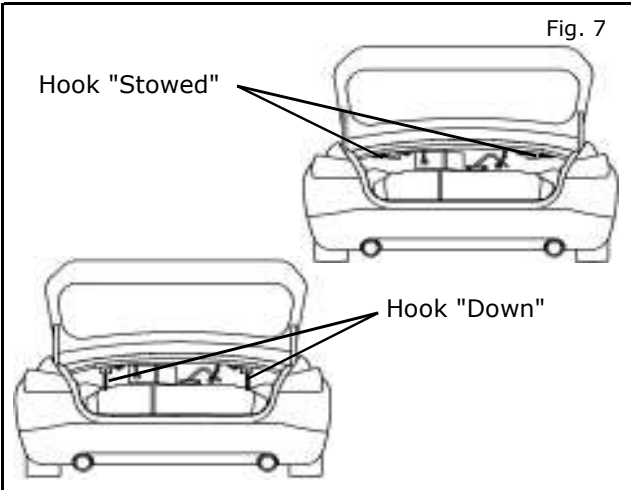


- d) Remove hex head screw from jack nut and discard.
- 8) Attach Shopping Bag Hook to Package Shelf.
 - a) Starting with Driver side, with shopping bag hook in stowed position, insert phillips screw, align with jack nut and anti-rotation hole and fully hand tighten.
 - 9) Repeat steps 1) to 8) for Passenger side.

INSTALLATION PROCEDURE:



- 10) Shopping Bag Hook use: Move shopping bag hooks into either "stowed" position or "down" position (Fig. 7). When not in use, place shopping bag hooks in "stowed" position.



DRILL TEMPLATE:

