



GENUINE PARTS

INSTALLATION INSTRUCTIONS

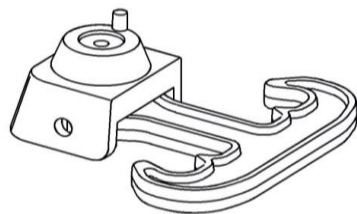
DESCRIPTION: Shopping Bag Hook

APPLICATION: Altima

PART NUMBER: 999C2 J2005

KIT CONTENTS:

Item	Qty.	Part Description
A	2	Shopping Bag Hook
B	2	Phillips Head Screw #10-24 x 1"
C	1	Hex Head Screw #10-24 x 1"
D	2	Jack Nut #10-24
E	2	Jack Nut Friction Wrench
F	1	Installation Instruction Replacement Template



A



B



C



D



E



F

TOOLS REQUIRED:

- Phillips Screw Driver
- 5/16" Socket
- Drop Cloth
- Torque Wrench
- 3/16" & 3/8" HSS drill bits
- Cordless Drill
- Center Punch
- Deburring tool or file
- Hammer
- Scissors
- Tape

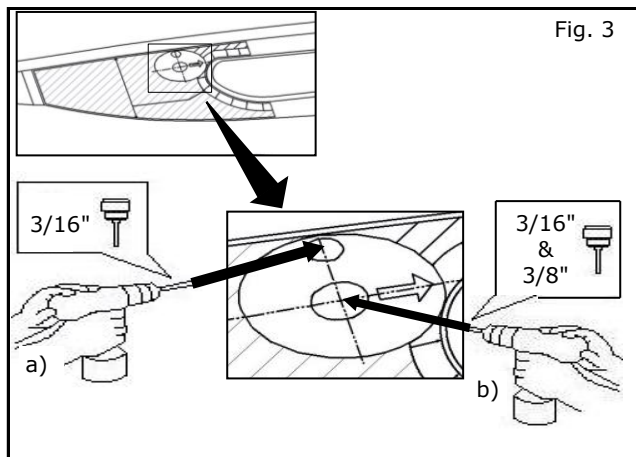
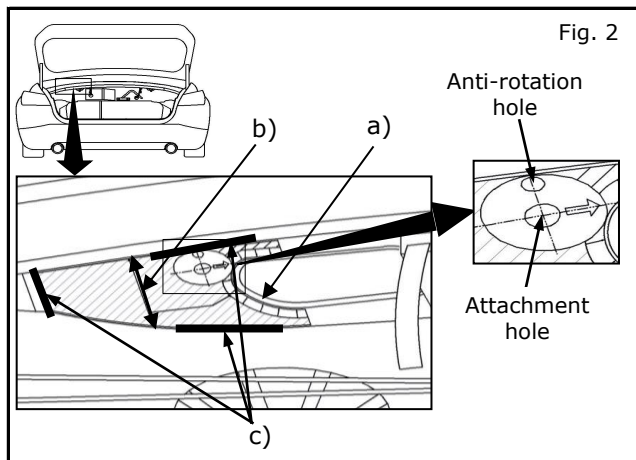
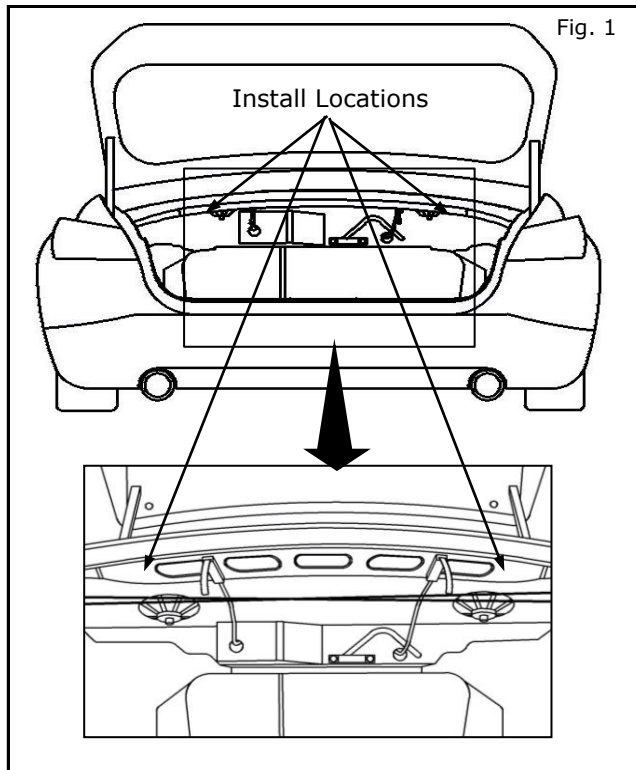
WARNING

- Each Shopping Bag Hook is designed to transport normal cargo contents. Flammable or dangerous materials should not be transported in your vehicle at any time.
- Do not exceed the recommended load of 15 lbs per Shopping Bag Hook.
- Do not use pilot point drill bits during installation process. These drill bits can leave large burrs and cause enlarged holes. Use HSS drill bits made for drilling steel only.

CAUTION

- Do not overtighten the Hex Head Screw. Maximum torque is 1.6 to 1.8Nm (14 to 16inlbs)

INSTALLATION PROCEDURE:



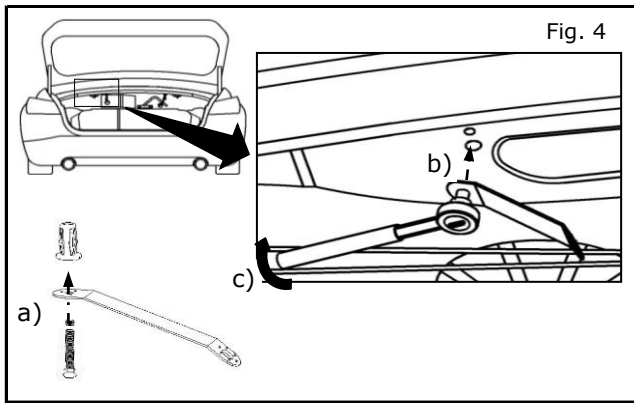
- 1) Go to Page 5, make sure drill template is printed to scale and cut out Driver Side Drill Template.
- 2) Place a drop cloth in trunk to catch metal shavings.

- 3) Align Drill Template (Driver Side).
 - a) Align inboard edge with rounded sheet metal cutout.
 - b) Align edges of drill template with edges of sheet metal. Center between tangent radii.
 - c) Tape template to sheet metal.
 - d) Mark center of attachment hole and anti-rotation hole using center punch/hammer.

Note: Do not use pilot point drill bits. Use HSS bits for drilling steel only.

- 4) Drill anti-rotation and attachment holes.
 - a) Using a 3/16" drill bit, drill anti-rotation hole.
 - b) Using a 3/16" drill bit, pre-drill attachment hole then re-drill using a 3/8" drill bit.
- 5) Remove template then remove any burrs around both holes using hand deburring tool.
- 6) Remove metal shavings from trunk floor.

INSTALLATION PROCEDURE:

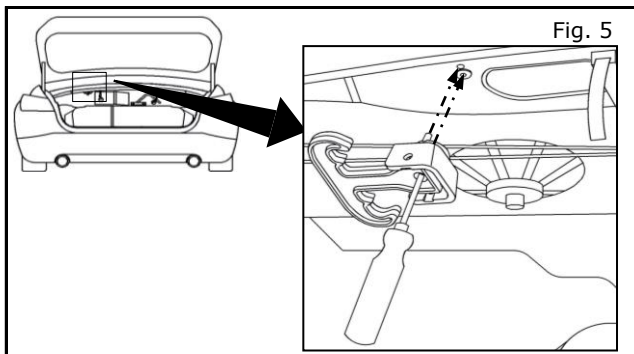


- 7) Attach Jack Nut to package shelf.
 - a) Feed hex head screw through large hole in jack nut friction wrench and thread (hand tight) into jack nut.
 - b) Starting with Driver Side, insert jack nut/screw assembly into attachment hole, keeping jack nut firmly pressed against sheet metal.
 - c) Use 5/16" socket with a torque wrench and tighten hex head screw until jack nut is fully collapsed at a maximum between 1.6 to 1.8Nm (14 to 16inlb).

⚠ CAUTION

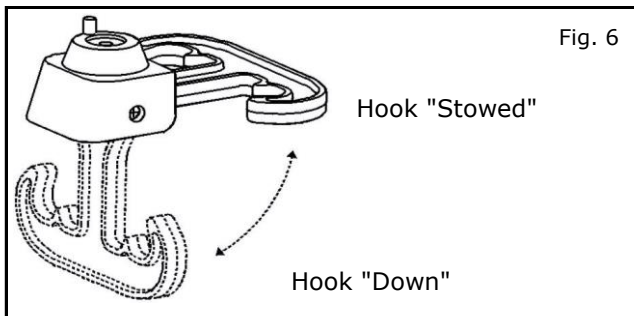
• **Do not overtighten the Hex Head Screw. Maximum torque is 1.6 to 1.8Nm (14 to 16inlb).**

- d) Remove hex head screw from jack nut and save for passenger side.

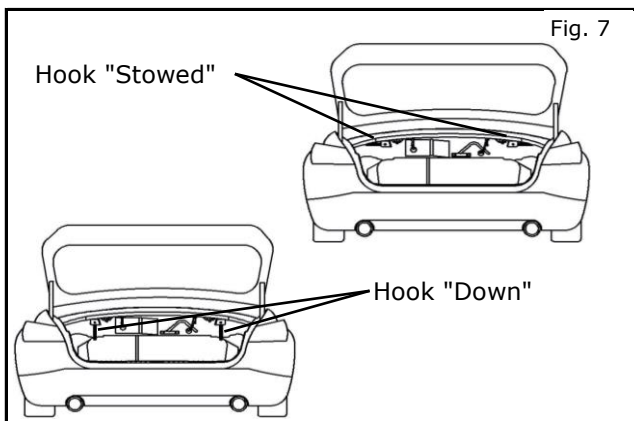


- 8) Attach Shopping Bag Hooks to Package Shelf.
 - a) Starting with Driver side, with shopping bag hook in stowed position, insert phillips screw, align with jack nut and anti-rotation hole and fully tighten.

- 9) Repeat steps 1) to 8) for Passenger side.



- 10) Shopping Bag Hook use: Move shopping bag hooks into either "stowed" position or "down" position (Fig. 7). When not in use, place shopping bag hooks in "stowed" position.



INTENTIONALLY LEFT BLANK

DRILL TEMPLATE:

