



GENUINE PARTS

INSTALLATION INSTRUCTIONS

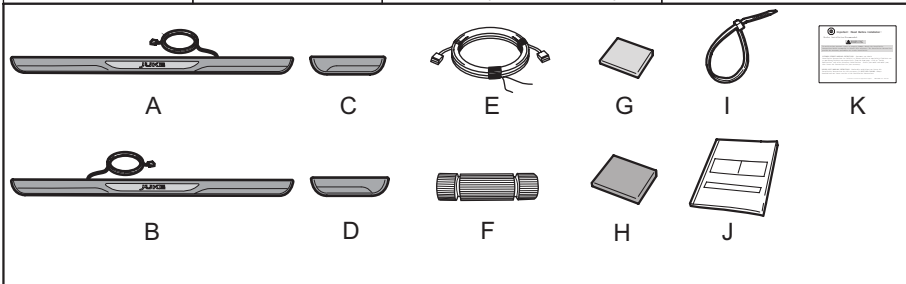
DESCRIPTION: Illuminated Kick Plate

APPLICATION: JUKE (2011)

PART NUMBER: Illuminated Kick Plate (G6950 1KM0B)

KIT CONTENTS:

ITEM	Q' TY	DESCRIPTION	SERVICE PART NUMBER
A	1	Kick Plate FR LH	G6952 1KL0A
B	1	Kick Plate FR RH	G6951 1KL0A
C	1	Kick Plate RR LH	G6954 1KL0A
D	1	Kick Plate RR RH	G6953 1KL0A
E	1	Harness	
F	2	Positap	
G	11	Urethane foam tape(Black)	
H	3	Foam tape(Gray)	
I	12	Tie Wrap	
J	1	Installation Instructions	
K	1	I/I Replacement Template	



TOOLS REQUIRED

- Thermometer
- Nylon removal tool
- Flashlight
- Wire cutter
- Ruler
- Fish tape
- Socket wrench (10mm)
- 100% alcohol solution
- Soft non linting towel
- Masking Tape

PRE-INSTALLATION CAUTIONS/NOTES

⚠ CAUTION

- Dealer Installation Recommended. Instructions refer to Service Manual.
- Please read this instruction carefully before installing this product for correct installation.
- Please DO NOT use or install the part in ways other than what is described in this instruction manual.
- If problem occurs during installation, please contact Nissan dealer where you purchased the product.

- 1) Apply Parking Brake.
- 2) Make sure the shift lever is engaged in "P" or "N" position.
- 3) Record the customer radio presets and other presets as required

Preset	1	2	3	4	5	6	7

- 4) Use seat and floor protection.
- 5) Open the hood of the vehicle.
- 6) Disconnect the negative battery terminal to prevent short circuits during installation.
- 7) This part is to be installed at a surface temperature of 65-100 F.

Wiring harness routing:

- Wherever possible route the harness along side the original vehicle harness.
- Fix the harness to the cable ties at 20cm intervals.
- Make sure the harness does not touch or foul an mechanical Controls or adjusters: heater controls, pedals, steering column, etc.
- For safety reasons, never tie the harness to any airbag harness (yellow connectors).

INSTALLATION PROCEDURE:

CAUTION

- Care must be taken not to scratch or damage any components during the removal or replacement process.

- 1) Remove the following interior trim parts in the sequence shown below. Store these re-usable parts in a safe and protected manner.

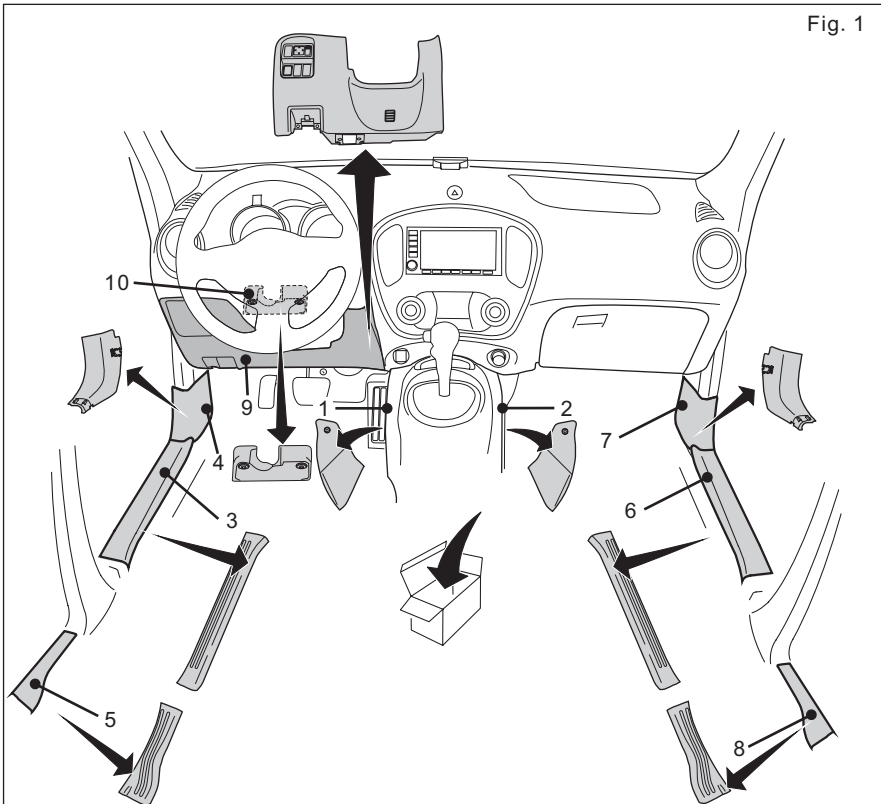


Fig. 1

Remove squence

- | | |
|---------------------------------|---------------------------------|
| 1. Instrument side panel LH | 6. Front Kicking Plate Inner RH |
| 2. Instrument side panel RH | 7. Dash side finisher RH |
| 3. Front kicking plate inner LH | 8. Rear kicking plate inner RH |
| 4. Dash side finisher LH | 9. Instrument lower panel LH |
| 5. Rear kicking plate inner LH | 10. Steering column cover |

INSTALLATION PROCEDURE:

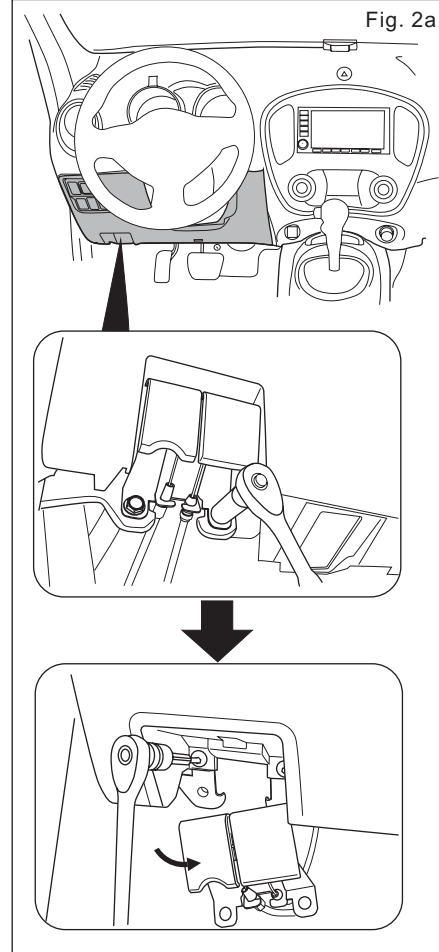


Fig. 2a

- 2) Instrument driver lower cover removal
 - a) Remove the clips from the two control buttons of fuel tank cap and the engine hood, on the instrument lower panel under the steering. Take off the control buttons, then remove the plastic sheeting.
 - b) Remove the instrument lower panel under the steering wheel used the nylon removal tool, locate the vehicle BCM.

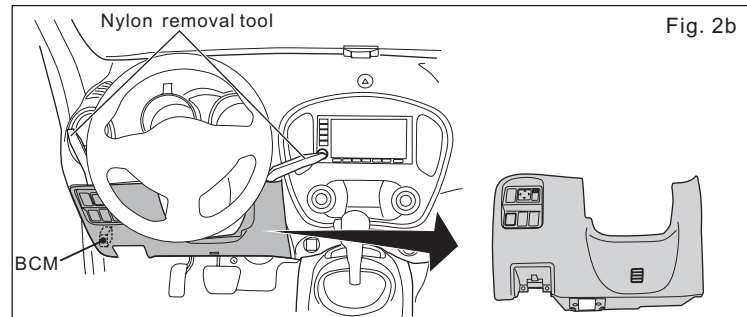
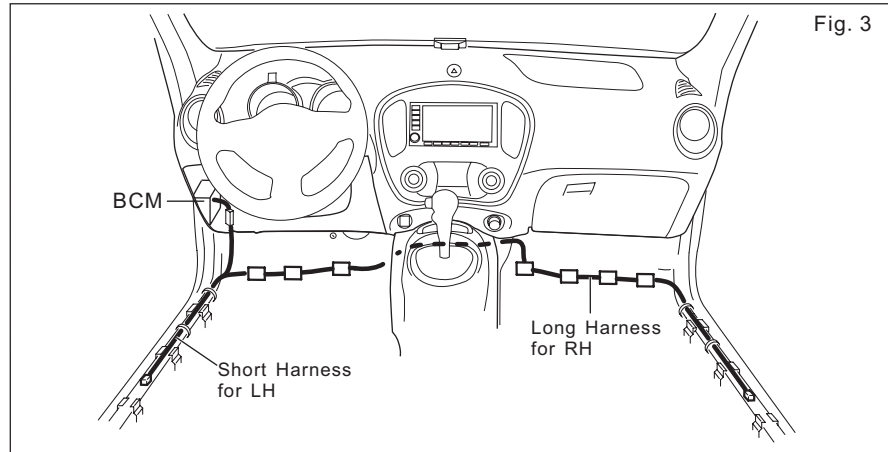


Fig. 2b

INSTALLATION PROCEDURE:

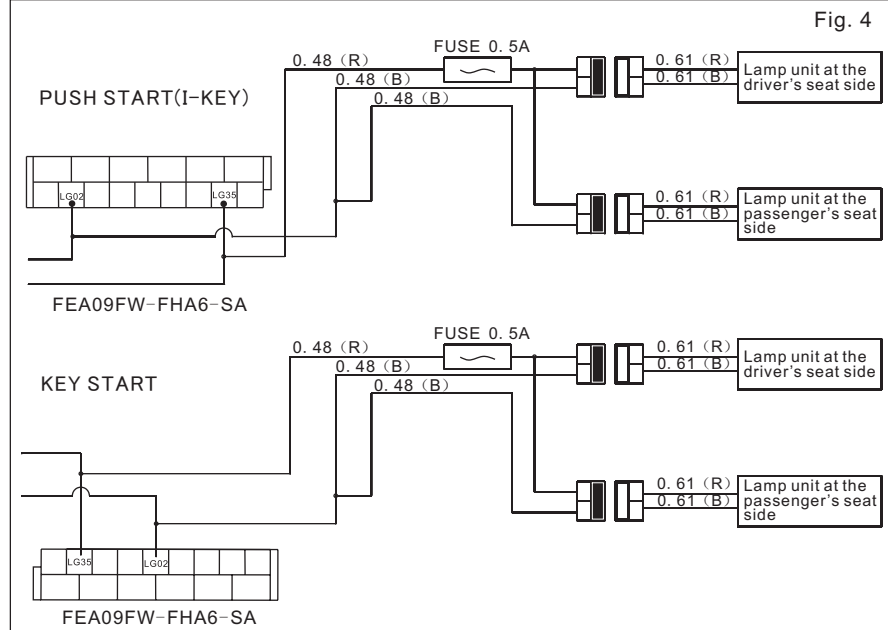
3) INSTALLATION OUTLINE



4) STANDARD CONNECTION METHOD

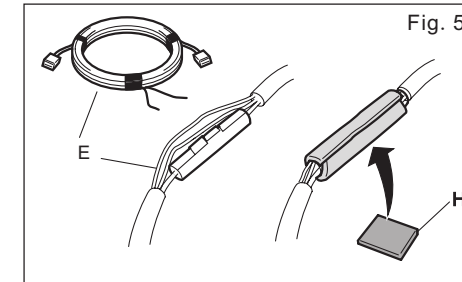


Vehicle wiring color description is just for reference. Please refer to vehicle wiring diagram for details.



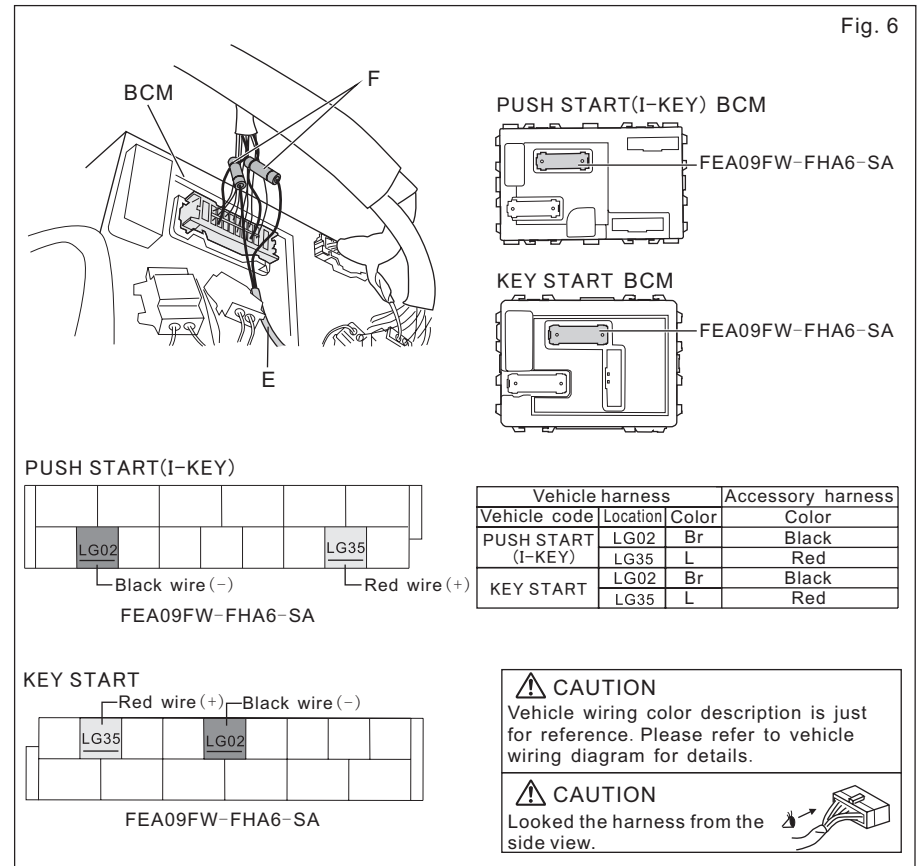
INSTALLATION PROCEDURE:

5) WIRING HARNESS INSTALLATION



a) Wrap the fuse of harness E with one of Urethane foam tape H. See in Fig. 5.

b) Connect with positap the harness E to vehicle BCM



Vehicle harness		Accessory harness	
Vehicle code	Location	Color	Color
PUSH START (I-KEY)	LG02	Br	Black
	LG35	L	Red
KEY START	LG02	Br	Black
	LG35	L	Red

CAUTION
Vehicle wiring color description is just for reference. Please refer to vehicle wiring diagram for details.

CAUTION
Looked the harness from the side view.

INSTALLATION PROCEDURE:

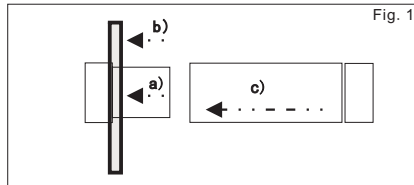


Fig. 1

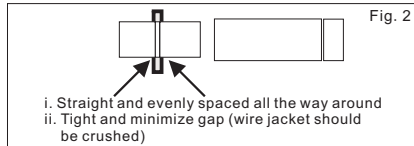


Fig. 2

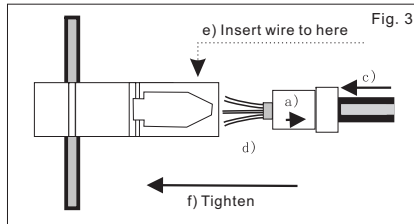


Fig. 3

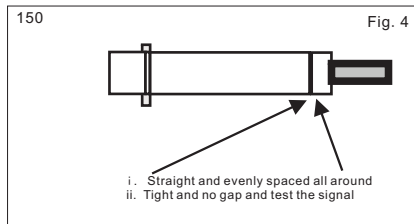


Fig. 4

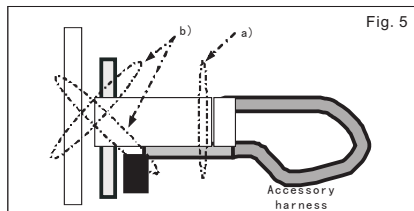


Fig. 5

NOTE:

IF UNCLEAR IT IS UP TO THE RESPONSIBLE NTCNA ACCESSORY ENGINEER TO DETERMINE WHICH OF THE METHODS ABOVE IS MOST APPROPRIATE. WHEN USING MULTIPLE POSI-TAPS IN THE SAME AREA, POSI-TAPS CAN BE TAPED TOGETHER PRIOR TO USING EITHER METHOD.

- 0) Identify and confirm (test if necessary) the correct vehicle wire to be tapped.
- 1) Tap vehicle wire.
 - a) Remove cap (slot side) from tap body
 - b) Slide cap around vehicle wire
 - c) Tighten the tap TIGHT with finger pressure

NOTE:

Do not re-use the tap for subsequent re-installation. Figures are not to scale.

- 2) Inspect the tap to ensure correct installation.

NOTE:

Avoid putting pressure on the vehicle wire and tap for the remainder of the installation.

- 3) Tap accessory wire.

- a) Remove tap (non-pierce) side from tap.
- b) Remove the protective stub from the wire.
- c) Insert wire through the non-pierce side opening.
- d) Insert wire through the non-pierce side opening.
- e) Insert wire into the tap body and ensure that it is all the way in.
- f) Tighten the tap TIGHT with finger pressure.

- 4) Confirm the tapped accessory wire.

- a) Inspect the tap to ensure correct installation.
- b) Test the signal to ensure that it is working properly.

- 5) Secure the tap.

- a) Secure the tapped wire on the non-pierce side to the body of the tap with electrical tape (≥ 2 revolutions).
- b) Secure the body to harness where vehicle wire is being tapped with electrical tape (≥ 2 revolutions).

INSTALLATION PROCEDURE:

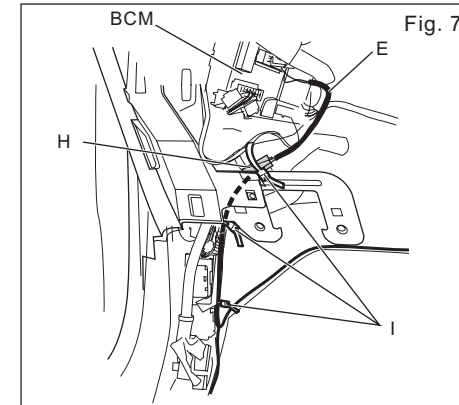


Fig. 7

- c) Wrap the connected connector with one piece of Urethane Foam Tape H. See in Fig. 7.
- d) Attach the Harness E to vehicle harness at the position using the tie wrap I (3 pieces). See in Fig. 7.

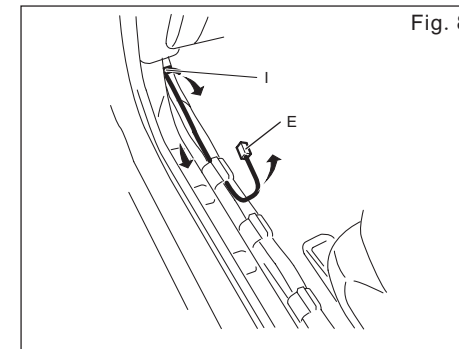


Fig. 8

- e) Route the short Harness E along the vehicle harness, and attach the short Harness E to vehicle's harness using the Tie Wrap I. See in Fig. 8.

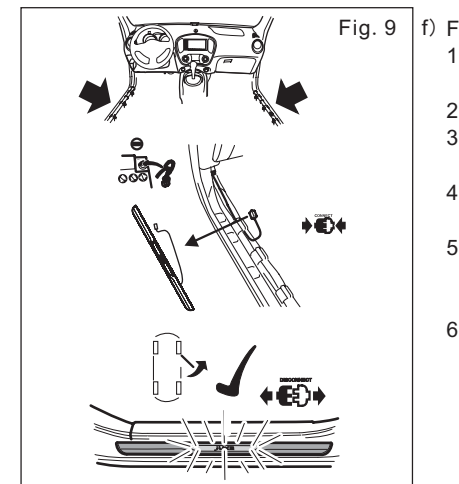


Fig. 9

- f) Function check. See in Fig.9.
 - 1) Connect Harness to kick plate lamp unit harness.
 - 2) Connect battery.
 - 3) Check function. Confirm "JUKE" text illuminates when either door is open.
 - 4) If OK, disconnect Harness from kick plate harness.
 - 5) If NG, check harness. Do not pull harness beside the fuse. Repeat steps 1) to 3) until it is OK.
 - 6) Disconnect battery.

INSTALLATION PROCEDURE:

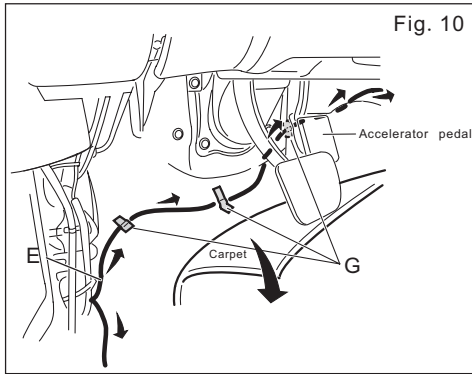


Fig. 10

- g) Flip the carpet of driver side.
- h) Route a long harness from the driver side to the passenger side through the center console under floor carpet. Shown in Fig. 10.
- i) Attach the long Harness E to floor using the Flat Wire Protector G . (3 pieces) . See in Fig. 10.

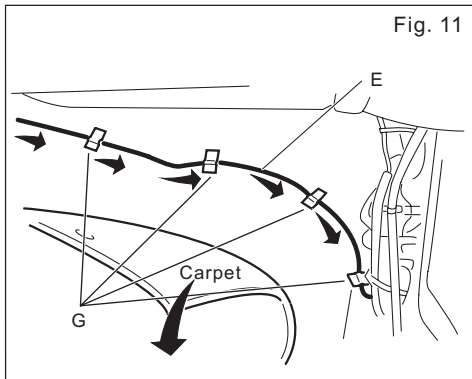


Fig. 11

- j) Flip the carpet of passenger side.
- k) Attach the long Harness E to floor using the Flat Wire Protector G . (4 pieces) . See in Fig. 11.

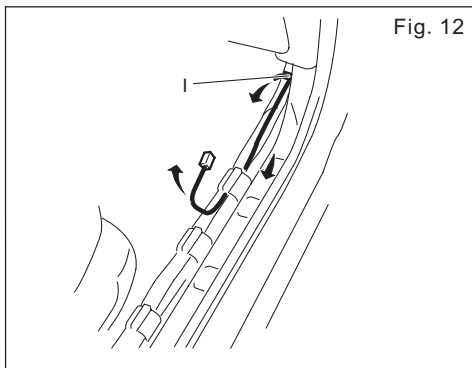


Fig. 12

- l) Route the long Harness E along the vehicle harness, and attach the long Harness E to vehicle's harness using the Tie Wrap I . (1 piece) . See in Fig. 12.

INSTALLATION PROCEDURE:

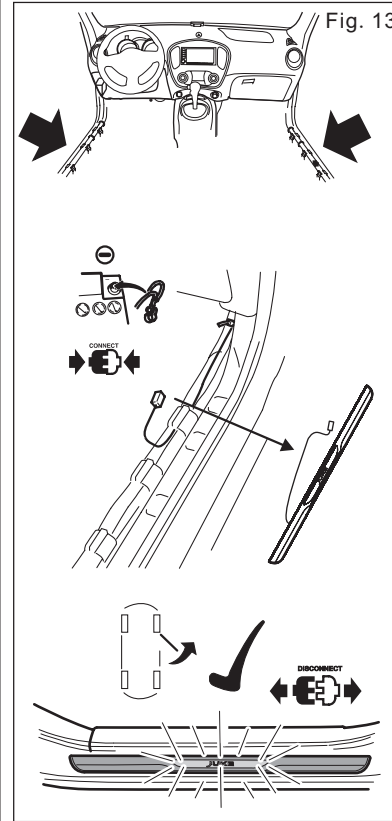


Fig. 13

- m) Function check. See in Fig. 13.
 - 1) Connect Harness to kick plate lamp unit harness.
 - 2) Connect battery.
 - 3) Check function. Confirm "JUKE" text illuminates when either door is open.
 - 4) If OK, disconnect Harness from kick plate harness.
 - 5) If NG, check harness. Do not pull harness beside the fuse. Repeat steps 1) to 3) until it is OK.
 - 6) Disconnect battery.

6) FRONT KICK PLATE INSTALLATION

NOTE: The procedure below shows the installation for LH side, repeat procedure for RH side.

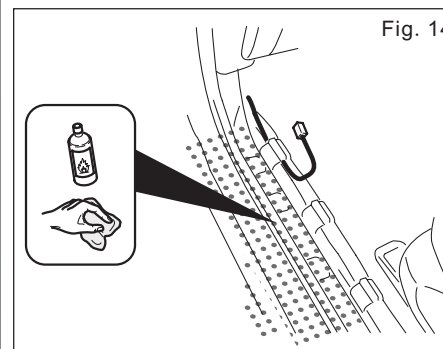


Fig. 14

- a) Clean the attachment area of kick plate A with 100% alcohol, then dry area with soft non linting towel.

INSTALLATION PROCEDURE:

- b) Remove the vehicle weather strip near the kick plate.
- c) Paste the tape on the edge of Harness protector, keep parallel.
- d) Paste the tape on the installation area 43mm from inner surface of the door flange.

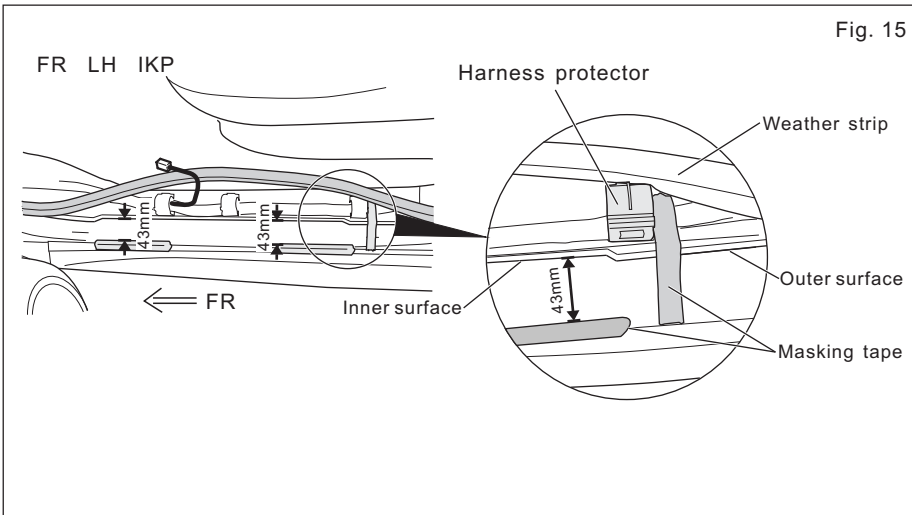


Fig. 15

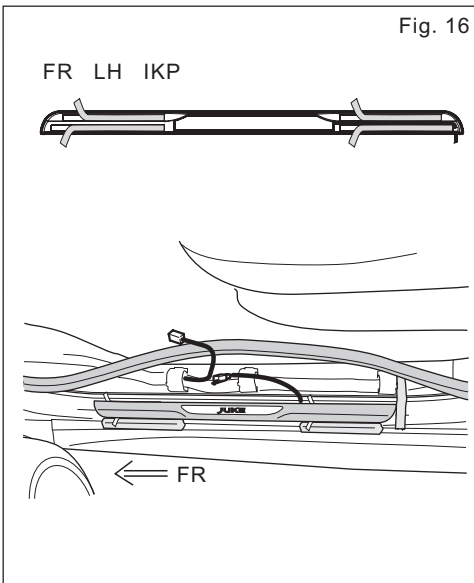


Fig. 16

- e) Pull the pull tab of the double-sided tape liner about 30mm to fold outside of the kick plate. See in Fig. 16.

INSTALLATION PROCEDURE:

7) HARNESS CONNECTION INSTALLATION

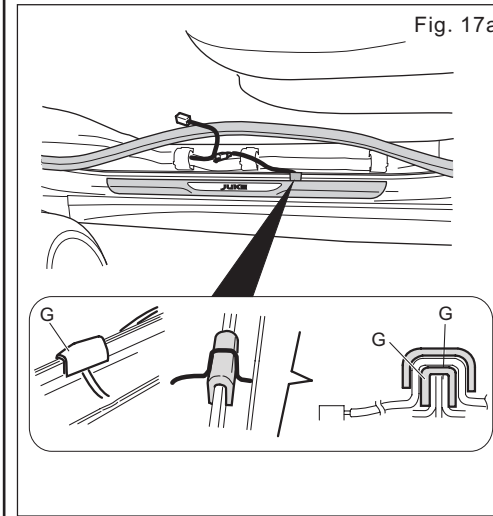


Fig. 17a

- a) Attach the Flat Wire Protector G to vehicle flange. Place the lamp harness on top of the Flat Wire Protector G. Attach the Flat Wire Protector, See in Fig. 17a.

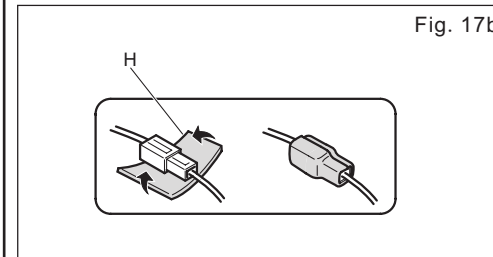


Fig. 17b

- b) Connect connector and apply the Urethane Foam tape H on the connect section, See in Fig. 17b.

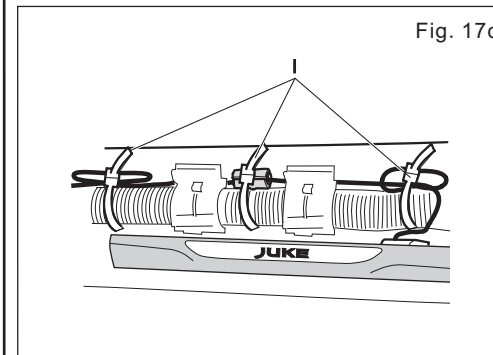


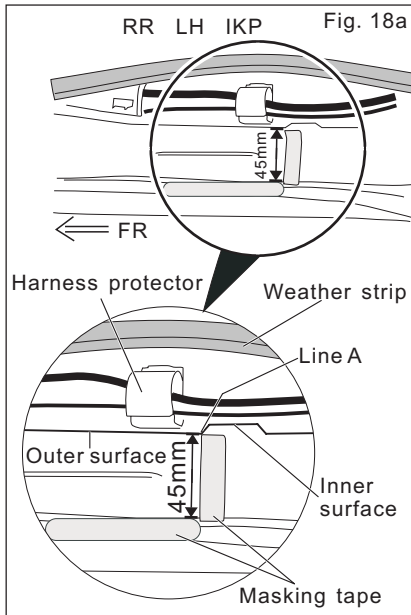
Fig. 17c

- c) Attach excess lamp harness to the vehicle harness with a Tie Wrap I, See in Fig. 17c.

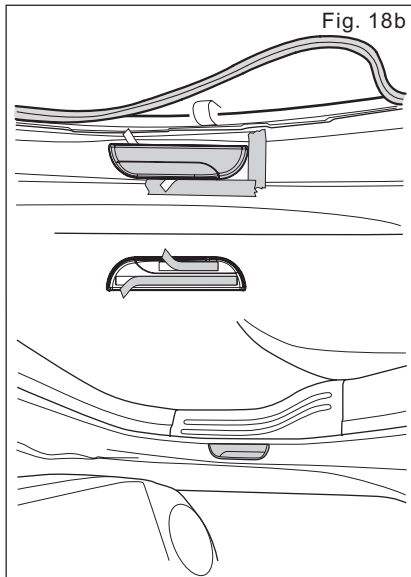
INSTALLATION PROCEDURE:

8) REAR KICK PLATE INSTALLATION

NOTE: The procedure below shows the installation for LH side. Repeat procedure for RH side.



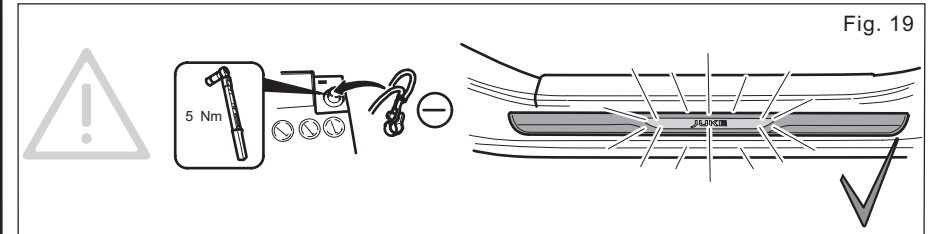
- a) Fix a position
- 1) Remove the vehicle weather strip near the kick plate.
 - 2) Paste the tape to align with Line A.
 - 3) Paste another tape on the installation area 45mm from outer surface of the door flange. See in Fig. 18a.



- b) Installation LH kick plate
- 1) Pull the double-sided tape liner-pull tab of the kick plate.
 - 2) Align kick plate to the edge of the masking tape. Press the kick plate on vehicle, then peel the liner from kick plate side. Press along the part to attach tape carefully to body. See in Fig. 18b.

ACCESSORY CHECK

- Connect the battery negative terminal and tighten the nut to appropriate torque.
- Check all Critical Installation Steps.
- Check all torque values. (Reference related steps and figures)
- Verify all wiring is secure and not exposed.
- Trim all excess cable ties flush.
- Confirm "Juke" text illuminates when either door is open.

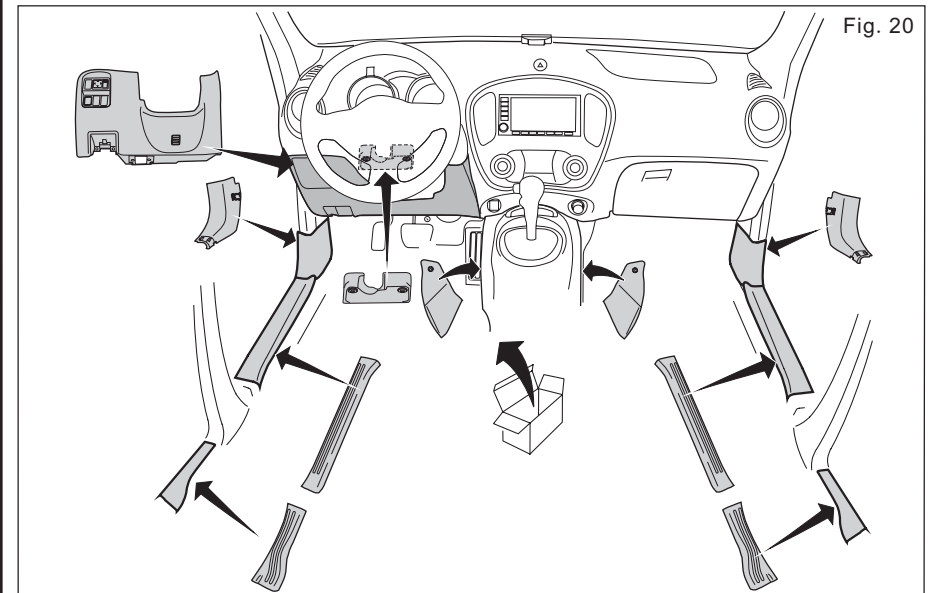


RE-INSTALLATION OF REMOVED PARTS:

- Re-install all removed vehicle parts. Refer to the vehicle service manual for more details.
- Clean interior of vehicle.

CAUTION

- Use caution when re-installing interior components to avoid damage, scratch, or breaking of mounting clips. Refer to the vehicle service manual for more information.



FINAL INSPECTION:

- Verify re-installed trim parts for proper flush fit (no gap, no waviness, etc.).
- Verify all clips are fully engaged and locked.
- Verify re-installed trim parts are free from cracks, scratches or stress marks.
- Verify vehicle headliner, seat, steering wheel, center console, floor carpets, ect. are not soiled.
- Verify interior and exterior is not damaged.
- Turn ignition switch to "ON" and confirm proper operation of Vehicle Systems
 - If equipped, verify all window and sunroof one touch operation and perform the reset procedure if necessary. Refer to the vehicle service manual for more details.
 - Confirm proper audio function (AM, FM, SAT, CD and AUX).
- Re-program radio presets and other vehicle settings to the recorded settings.
- Start engine and verify that there are no new Diagnostic Trouble Codes. Turn ignition switch to "OFF".
- Place the Owner Manual, Quick Reference Guide, and/or other Manual in the glove box.

⚠ CAUTION

- Do not step on kick plate and wash vehicle for 24 hours after installing to prevent the double-sided tape from peeling.
- When turn off the ignition switch, please do not let the door opening for long time, or else electrical source can be used up.

Fig. 21

