

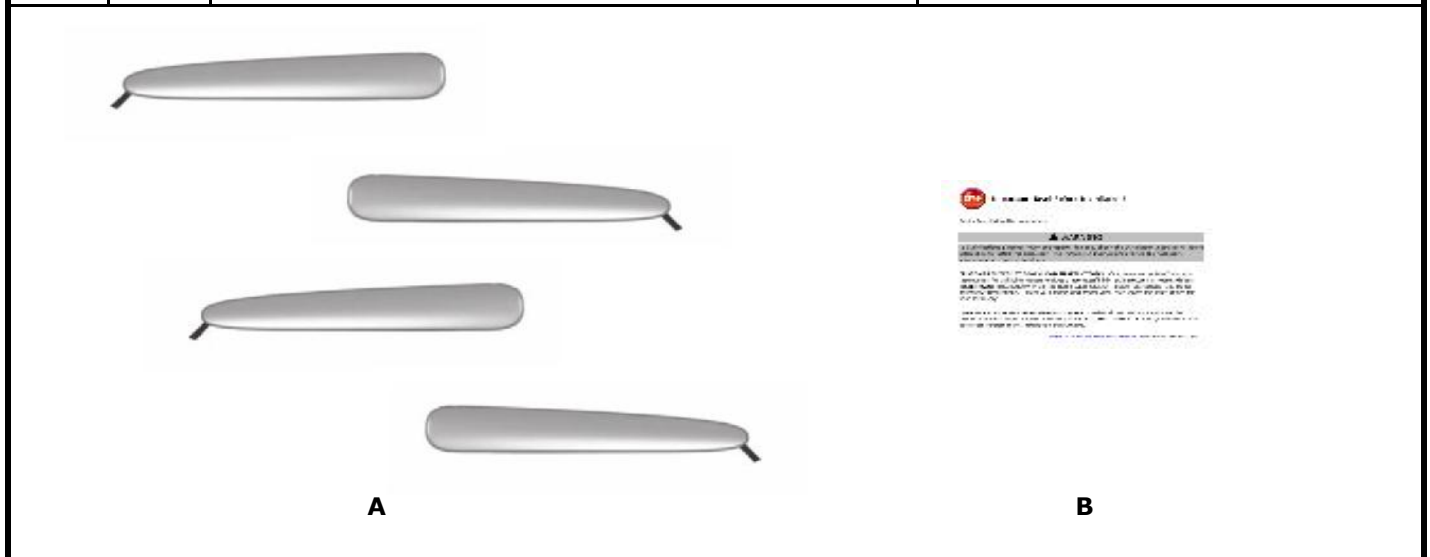


GENUINE PARTS

INSTALLATION INSTRUCTIONS

DESCRIPTION:	Door Handle Accent
APPLICATION:	Nissan Versa Sedan (2012+) Nissan Versa Note (2014+)
PART NUMBER:	999M1 7X204
KIT CONTENTS:	

Item	Qty.	Part Description	Service Part Number
A	4	Door Handle Accent	---
B	2	Instruction Replacement Template	---



- TOOLS REQUIRED:**
- 90% or greater Isopropyl Alcohol
 - Masking tape (Painter's tape preferred)
 - Clean, lint-free towel

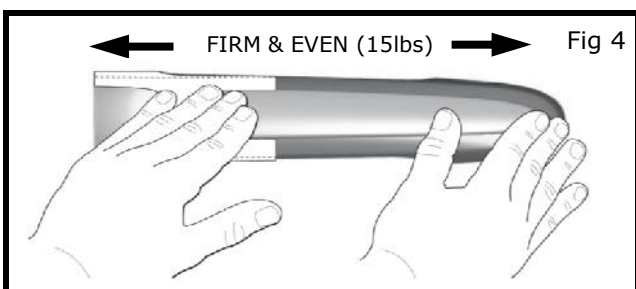
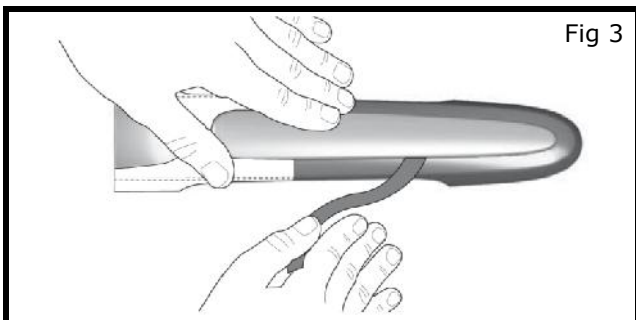
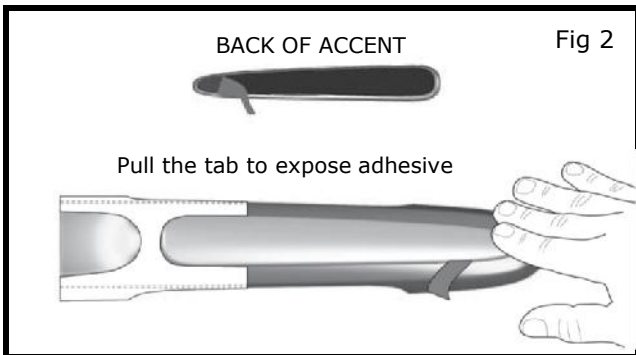
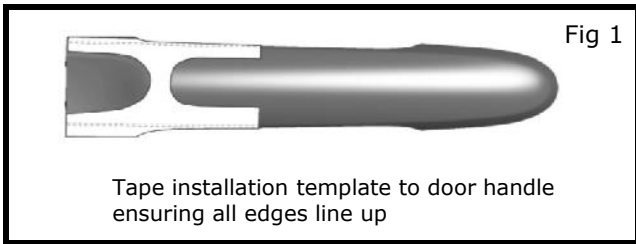
- PRE-INSTALLATION WARNINGS, CAUTIONS, CRITICAL STEPS, and NOTES:**
- Read the installation sheet and check the entire kit for possible damage or defects before performing any work.
 - Dry fit all parts to become familiar with proper placement.

CAUTION

- Do not touch the tape side with your fingers to avoid contaminating the tape and reducing adhesion strength.
- These parts are to be installed when the ambient temperature is between 70°F - 100°F (21°C - 38 °C).
- Do not wash or expose the vehicle to a wet environment for 24 hours after installing the Door Handle Accent.
- Install the Door Handle Accent in the correct position only after the alcohol has dried.
- The tape will set in 15-20 seconds after the installation.
- Do not reposition the Door Handle Accent once the tape has started to set/adhere to vehicle.

INSTALLATION INSTRUCTIONS - Door Handle Accent

INSTALLATION PROCEDURE:



⚠ CAUTION

Do not touch vehicle plastic parts including tail lamp lenses with isopropyl alcohol to avoid potential damage.

- 1) Clean all areas to be covered with the Door Handle Accent by using alcohol on a clean lint-free towel.
- 2) Use a new section of towel as you move from area to area. Allow to dry for at least 2 minutes.
- 3) Cut out installation template and tape to door handle ensuring all edges line up. (Fig. 1)

NOTE: Always dry fit parts to ensure proper fit and location.

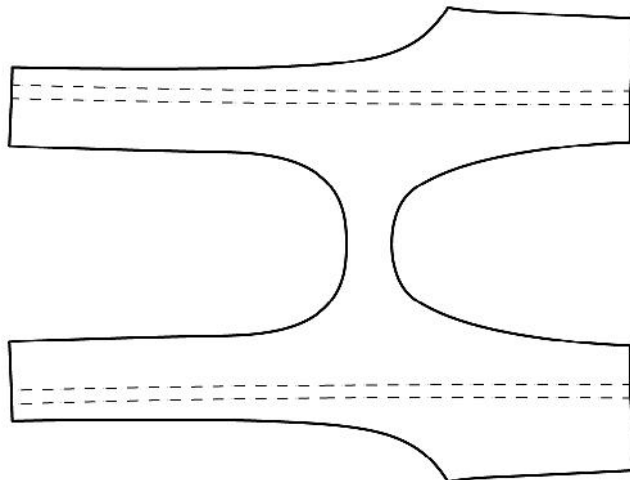
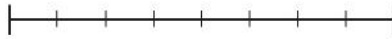
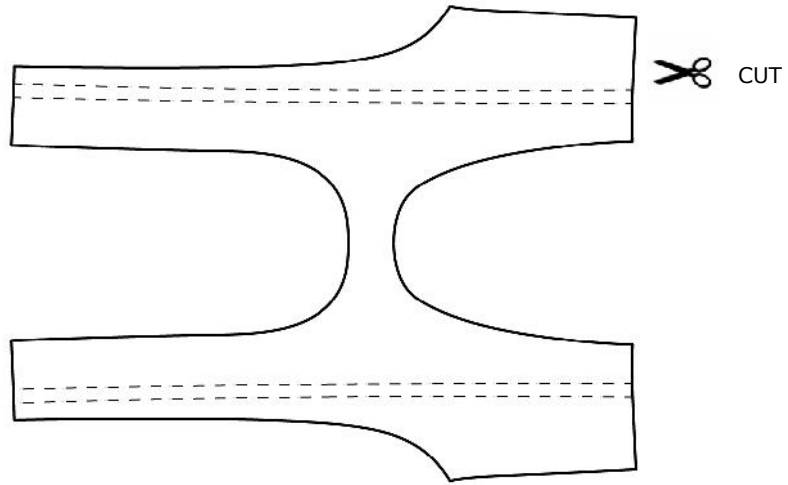
- 4) Pull the tab to expose 25 mm of adhesive. Carefully position part using template and tack Door Handle Accent into place. (Fig. 2)
- 5) Once Door Handle Accent is in position, hold in place and pull tape liner off to expose the remaining adhesive. (Fig. 3)
- 6) Apply even and firm pressure of 15 lbs. to the Door Handle Accent surface to ensure adequate adhesion.
- 7) Repeat steps 1 to 6 for the remaining Door Handle Accents.

INSTALLATION INSTRUCTIONS - Door Handle Accent

INSTALLATION TEMPLATE



2 INCHES



INSTALLATION INSTRUCTIONS - Door Handle Accent

INSTALLATION TEMPLATE



2 INCHES

