



GENUINE PARTS

INSTALLATION INSTRUCTIONS

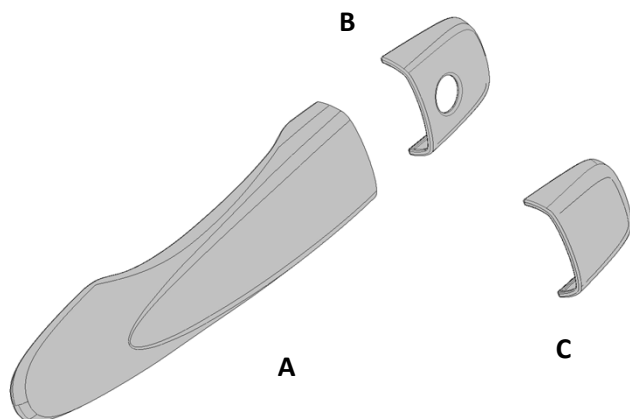
DESCRIPTION: Door Handle Covers W/O I-Key

APPLICATION: KICKS

PART NUMBER: T99G8 5RL1x

KIT CONTENTS:

Item	Qty.	Part Description	Service Part Number
A	4	Door Handle Cover W/O I-Key	---
B	1	Driver Door Handle Lock W/ Key Hole	---
C	3	Door Handle Lock W/O Key Hole	---
D	1	Instruction Replacement Template	---



TOOLS REQUIRED:

- 90% or greater Isopropyl Alcohol
- Clean, lint-free towel

PRE-INSTALLATION WARNINGS, CAUTIONS, CRITICAL STEPS, and NOTES:

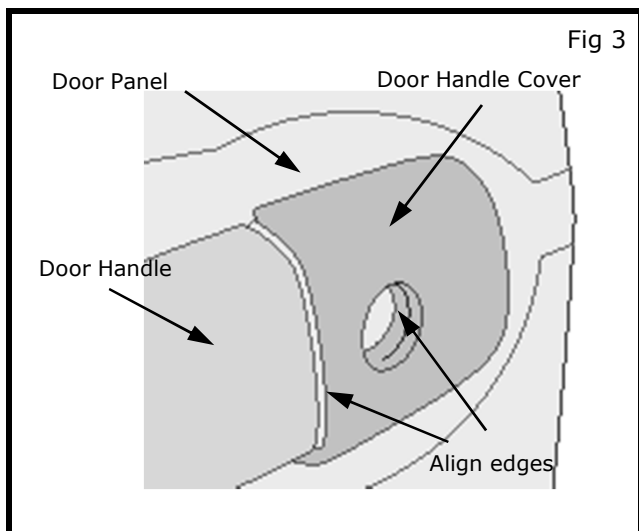
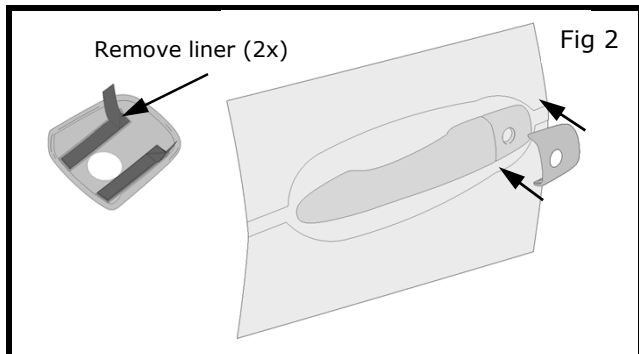
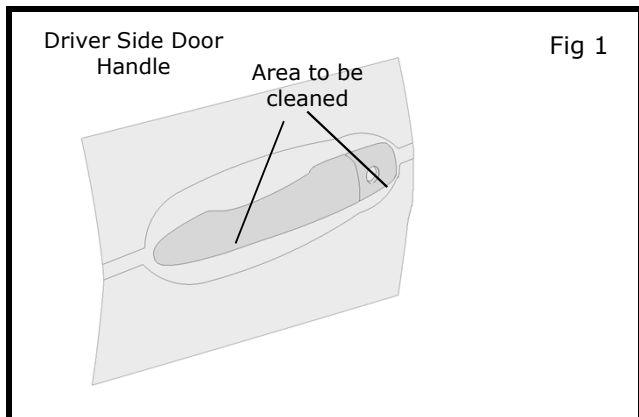
- Read the installation sheet and check the entire kit for possible damage or defects before performing any work.
- Dry fit all parts to become familiar with proper placement.

CAUTION

- Do not touch the tape side with your fingers to avoid contaminating the tape and reducing adhesion strength.
- These parts are to be installed when the ambient temperature is between 60°F - 110°F (16°C - 43°C).
- Do not wash or expose the vehicle to a wet environment for 24 hours after installing the Door Handle Covers.
- Install the Door Handle Covers in the correct position only after the alcohol has dried.
- The tape will set in 15-20 seconds after the installation.
- Do not reposition the Door Handle Covers once the tape has started to set/adhere to vehicle.

INSTALLATION INSTRUCTIONS - Door Handle Covers

INSTALLATION PROCEDURE:



CAUTION

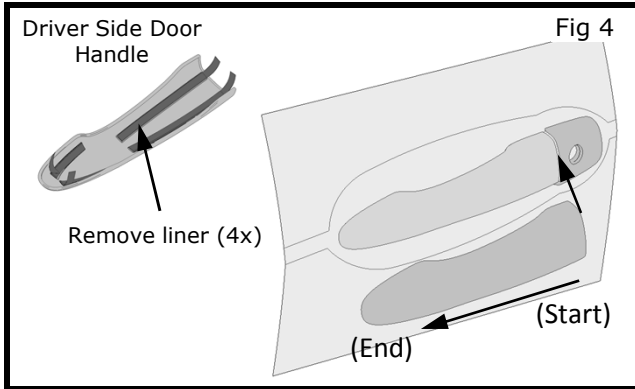
Do not touch vehicle plastic parts including tail lamp lenses with isopropyl alcohol to avoid potential damage.

- 1) Clean all areas to be covered with the Door Handle Covers by using alcohol on a clean lint-free towel.
- 2) Use a new section of towel as you move from area to area. Allow to dry for at least 2 minutes.

NOTE: Always dry fit parts to ensure proper fit and location.

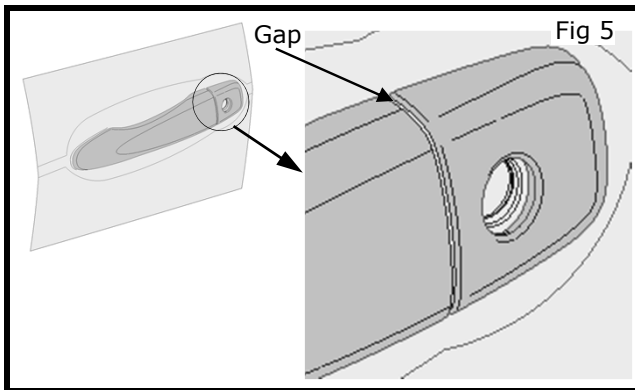
- 3) Remove the liners.
- 4) Align edges of Door Handle Cover W/ Key Hole to Door Handle (Fig. 3)
- 5) Apply even and firm pressure to the Door Handle Cover W/ Key Hole surface to ensure adequate adhesion.
- 6) Repeat steps 1 to 5 for other Door Handle Cover W/O Key Hole.

INSTALLATION INSTRUCTIONS - Door Handle Covers

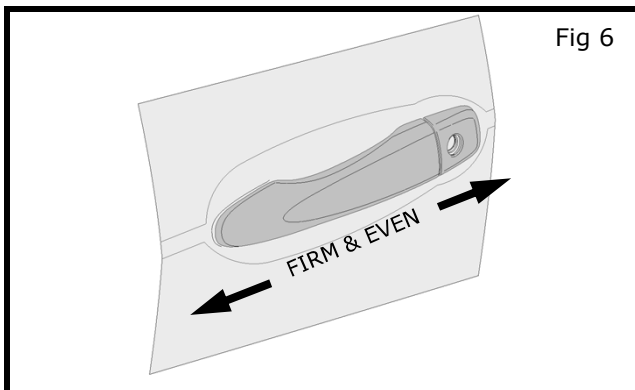


7) Remove the liners.

8) Align part to START point, once it is align to the edge place the part following the arrows to the END point (Fig. 4).



9) Make sure Door handle works properly before fixed the Door Handle Covers (Fig. 5). Check for no interference at gap, check Key hole function.



10) Apply even and firm pressure to the Door Handle Cover W/ Key Hole surface to ensure adequate adhesion. (Fig. 6)

11) Repeat steps 7 to 10 for other Door Handle Covers of doors.