



GENUINE PARTS

INSTALLATION INSTRUCTIONS

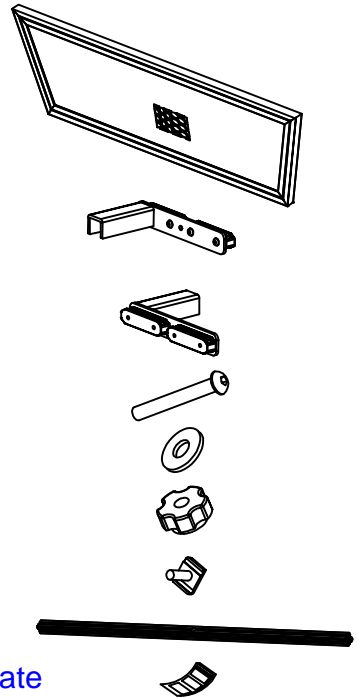
1. DESCRIPTION: UTILI-TRACK SLIDING BED DIVIDER

2. APPLICATION: NISSAN TITAN 2004-

3. PART NUMBER: 999T7-WQ500

4. KIT CONTENTS:

<u>Item No.</u>	<u>Qty</u>	<u>Description</u>
1	1	Bed Divider Main Grid
2	1	Right Hand Mounting Bracket
3	1	Left Hand Mounting Bracket
4	5	Allen Head 8mm bolts
5	5	Flat Washers
6	2	Knob
7	2	Anchor Plate
8	1	Top Bar
9	1	Installation Instructions Replacement Template



5: TOOLS REQUIRED:

Ratchet (3/8" drive)

6mm Allen Head Drive

Eye Protection

Torque Wrench (Suitable for 44.7Nm or 33ft-lbs)

6. INSTALLATION PRECAUTIONS / NOTES:

WARNING

- This is not designed as a cargo retention device.
- Unrestrained items may cause injury in a crash or sudden brake application. Please consult the vehicle owner's manual on how to properly secure cargo.

INSTALLATION INSTRUCTIONS - BED DIVIDER

7. INSTALLATION PROCEDURE

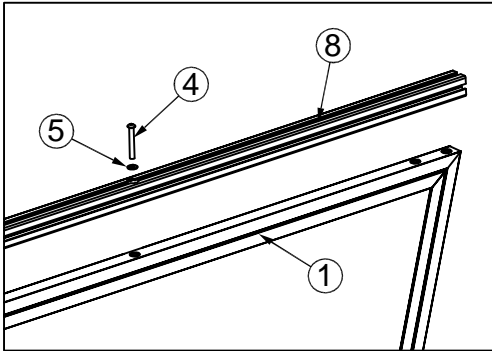


Fig. 1

1. Assemble the Top Bar (#8) to the Bed Divider (#1). Use one of the Allen Head 8mm Bolts (#4), and one Flat Washer (#5) in the center location. Do not tighten.
2. Place the Right Hand Side Mounting Bracket (#2) and the Left Hand Side Mounting Bracket (#3) on the Bed Divider Assembly oriented so the Knob (#6) will be on the finished (smooth) side of the Bed Divider (#1).

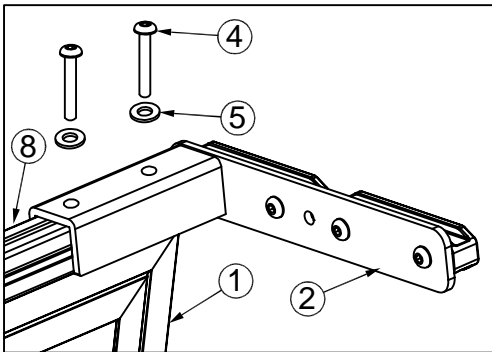


Fig. 2

3. Attach the Right Hand Side Mounting Bracket (#2) to the assembly with two Allen Head 8mm Bolts (#4) and two Flat Washers (#5). Do not tighten. (See Fig. 2)
4. Repeat for other side using the Left Hand Mounting Bracket (#3) and the remaining Allen Head 8mm Bolts (#4) and the Flat Washers (#5). Do not tighten.

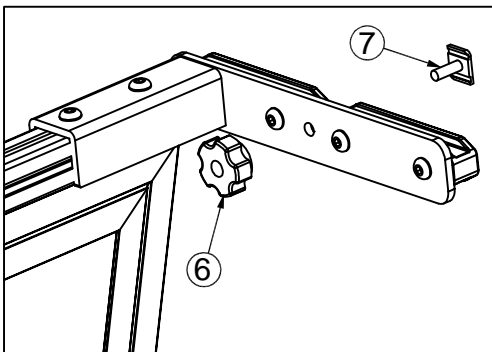


Fig. 3

5. Assemble the Knob (#6) and Anchor Plate (#7) to the Bed Divider (#1). Only turn the Knob (#6) onto the Anchor Plate (#7) a few turns. (See Fig. 3)
6. Repeat for other side.

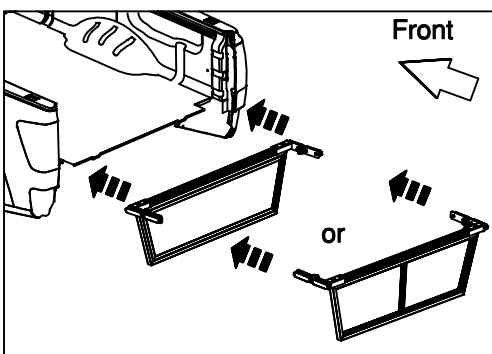


Fig. 4

7. With the tailgate down, slide the Mounting Brackets (#2 & #3) into the rail channels on the side of the box. Be sure the Anchor Plate (#7) is inserted into the utili-track and not outside of the utili-track. (See Fig. 4 and Fig. 5)

INSTALLATION INSTRUCTIONS - BED DIVIDER

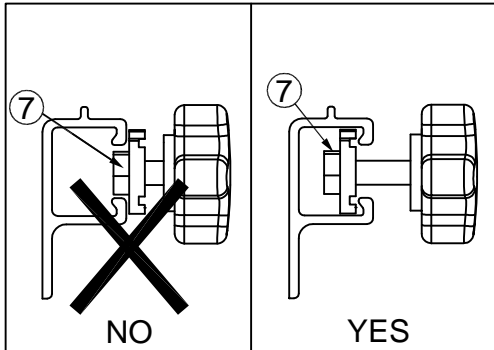


Fig. 5

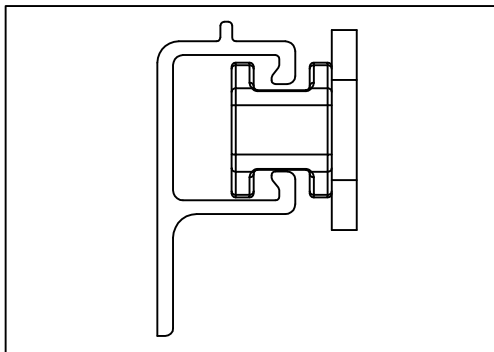


Fig. 6

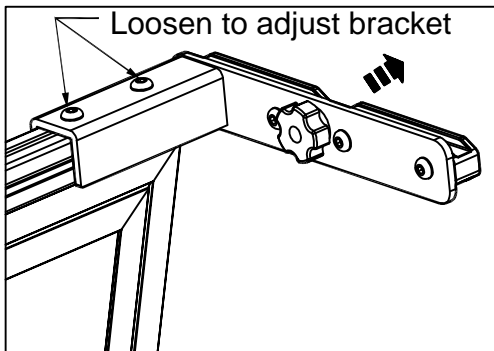


Fig. 7

8. For initial adjustment, slide the Bed Divider Assembly to the rear most position. Slide the Mounting Brackets (#2 & #3) out until they are centered as shown in Fig. 6 then tighten. Be sure to also tighten the center bolt (Fig. 1). Torque all 5 bolts to 44.7Nm or 33ft-lbs. (See Fig. 6 & Fig. 7)
9. Check to ensure Bed Divider Assembly slides freely from the front to rear of the bed. If adjustment is required follow Step 8.
10. Slide the Bed Divider Assembly to the desired location and tighten Knobs (#6). Turn Knobs (#6) clockwise and tighten as firmly as possible to secure in position.