



GENUINE PARTS

INSTALLATION INSTRUCTIONS

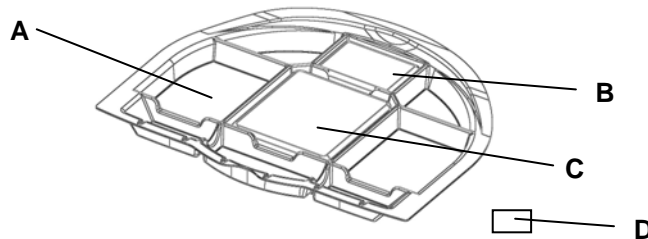
1. **DESCRIPTION:** TRUNK SUB-FLOOR ORGANIZER

2. **APPLICATION:** 2007, ALTIMA

3. **PART NUMBER:** 999C2-UT000

4. **KIT CONTENTS:**

Item	Qty	Description	Part Number	Service Part Number
A	1	Sub-Floor Organizer	999C2-UT001	
B	1	First Aid Kit	999M1-VQ000	
C	1	Emergency Road Kit	999M1-ST000	
D	1	Sticker for Trunk		



5. **TOOLS REQUIRED:**

N/A

6. **INSTALLATION PRECAUTIONS / NOTES:**

To maintain the luster of your organizer, clean with a cloth as required using standard automotive vinyl, leather and upholstery cleaners or soap and water

⚠ WARNING

- Your cargo organizer is designed to transport normal cargo contents. Flammable or dangerous materials should not be transported in your vehicle at any time. If any corrosive chemicals are spilled in your organizer it should be cleaned as described above.

⚠ CAUTION

- Organizer does not provide load restraint.

INSTALLATION INSTRUCTIONS – Sub-Floor Organizer

7. INSTALLATION PROCEDURE

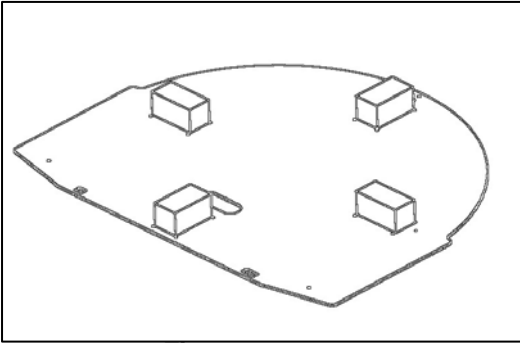


Figure 1

1. Move items in trunk to install organizer
 - a) Remove or push carpet forward
 - b) Remove load floor
2. Peel off foam pads from the underside of the load floor by hand and remove remaining residue **See Figure 1**

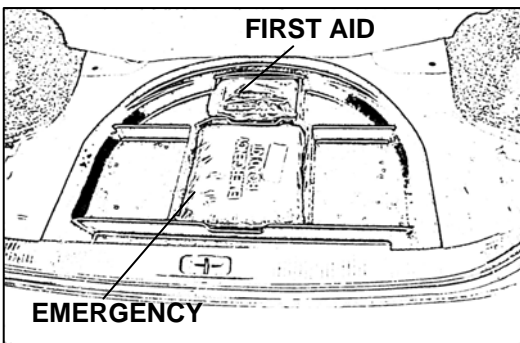


Figure 2

3. Place organizer **item A** in the trunk on the spare tire. Place the first aid kit **item B** in the forward pocket and the emergency kit **item C** in the center pocket **See Figure 2**

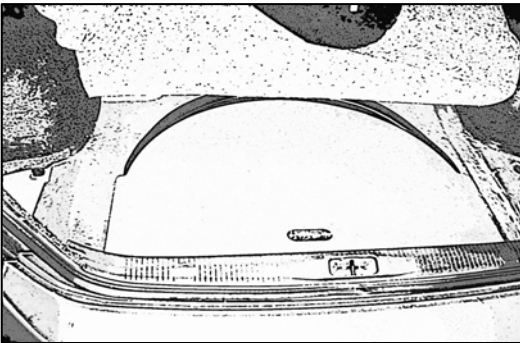


Figure 3

4. Place load floor on organizer within the forward curve **See Figure 3**

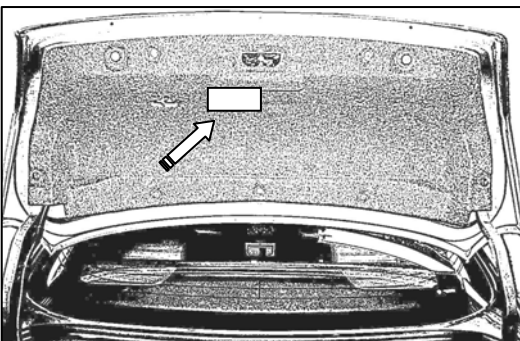


Figure 4

5. Place carpet in original position in trunk
6. Place label **item D** on underside of trunk lid **See Figure 4**