



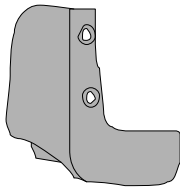
GENUINE PARTS

INSTALLATION INSTRUCTIONS

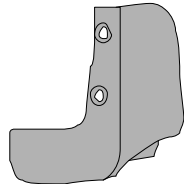
DESCRIPTION: Front Splash Guard Kit
APPLICATION: Quest (2011)
PART NUMBER: F3850 1JAx (xx Designates color)

KIT CONTENTS:

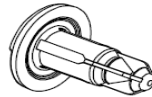
Item	Qty.	Part Description	Service Part Number
A	1	Splash Guard - Front Right	---
B	1	Splash Guard - Front Left	---
C	4	Push pin	---
D	1	Installation Instruction Replacement Template	---



A



B



C



D

TOOLS REQUIRED:

- Clean, lint-free wiping cloth
- 90% Alcohol
- Torx screwdriver (T20)
- Clip remover
- Masking tape

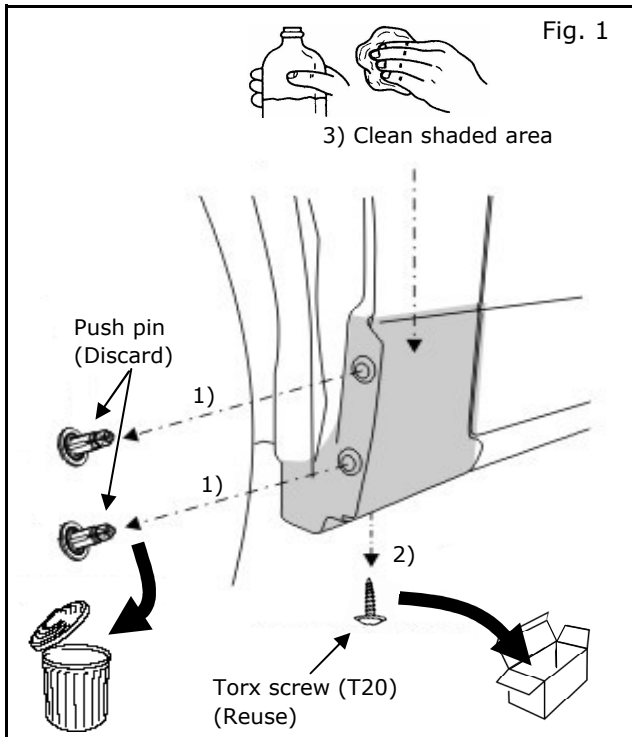
PRE-INSTALLATION WARNINGS, CAUTIONS, CRITICAL STEPS, and NOTES:

- Dealer Installation Recommended, Instruction may refer to Service Manual.
- These instructions are for the left side of the vehicle; the same procedure applies to the right side.

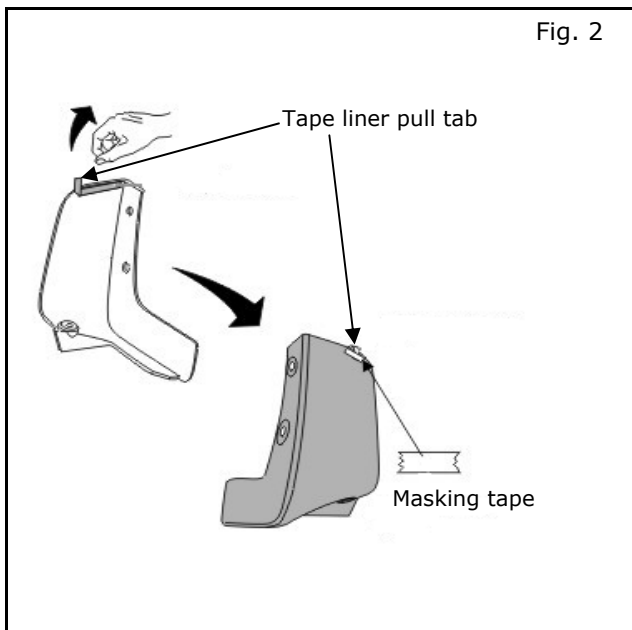
CAUTION

- Install the Splash Guard when the ambient temperature is above 60°F (15°C).
- Do not wash or expose vehicle to a wet environment for 24 hours after installing the Splash Guard.

INSTALLATION PROCEDURE:

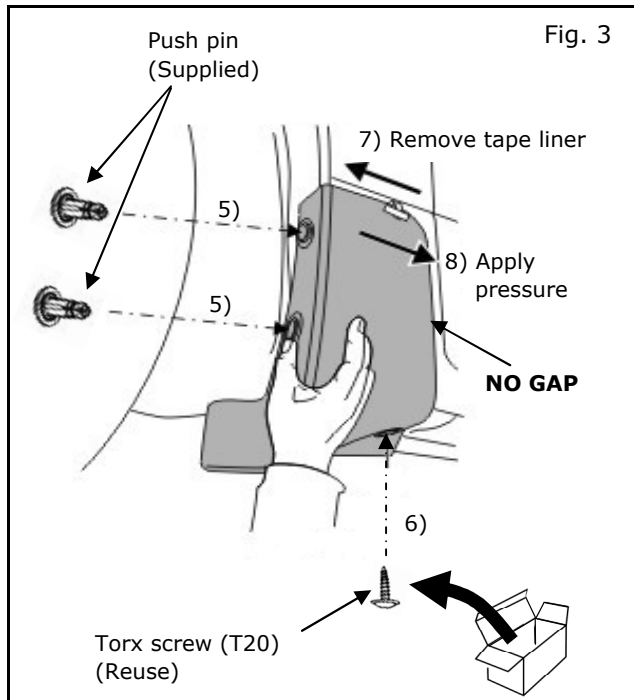


- 1) Remove and discard push pins in front wheelhouse area.
- 2) Remove Torx screw (T20) from underneath vehicle and keep to reuse.
- 3) Clean installation surface (shaded area) with $\geq 90\%$ alcohol.



- 4) Fold Tape liner pull tab and secure to outside surface of Splash Guard with masking tape.

INSTALLATION PROCEDURE:



- 5) Align Splash Guard to vehicle and install 2 push pins (supplied) in front wheelhouse area.
- 6) Install and tighten lower Torx screw (T20) (reuse) underneath vehicle.

NOTE:

- **Hold Splash Guard tight to vehicle while tightening screw to ensure no gap occurs between fender and Splash Guard.**
- **Do not over tighten screws. Reference Tighten Torque: 3.8~4.4 N-m {34~39 in-lb}**

- 7) Remove tape liner using pull tab (pull out on Splash Guard if necessary).
- 8) Apply pressure from front to rear along length of tape.

NOTE:

- **Use a roller of burnish by hand to apply a minimum of 15lbs of pressure along length of tape (starting at front of part and working rearward).**

- 9) Repeat steps for passenger side.

FINAL INSPECTION

- Verify all clips are fully engaged and locked.
- Confirm Splash Guard has no gaps to fender. If gap exists, loosen Torx screw (T20) underneath vehicle, Push Splash Guard tight to fender and re-tighten Torx screw (T20).
- Check all **torque** values. (Reference related steps and figures)