



GENUINE PARTS

INSTALLATION INSTRUCTIONS

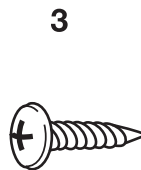
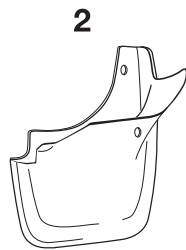
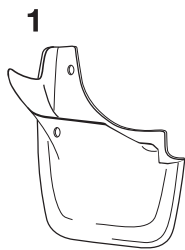
1. DESCRIPTION: Front Splash Guards

2. APPLICATION: Titan

3. PART NUMBERS: 999J2-WR00003

4. KIT CONTENTS:

<u>Item</u>	<u>Qty.</u>	<u>Part Number</u>	<u>Description</u>
1	1	63850 8S70A	Splash Guard Front (Right)
2	1	63851 8S70A	Splash Guard Front (Left)
3	6	14-51 00891	Screw - Tapping
4	2	12-81 00831	Plastic Grommet
5	1		Cleaning Cloth
6	1		Installation Instructions



5. TOOLS REQUIRED

#2 90° Phillips Screwdriver • Rag • 50/50 Alcohol/Water Mixture • Hand Roller

6. INSTALLATION PRECAUTIONS

- (A) Be careful not to damage the vehicle and the splash guards during installation.
- (B) The splash guards are made of plastic. Avoid any heavy impact.
- (C) After the installation is complete, make sure all the screws, nuts, bolts and other components are tightened securely.
- (D) Installation surface must be clean.

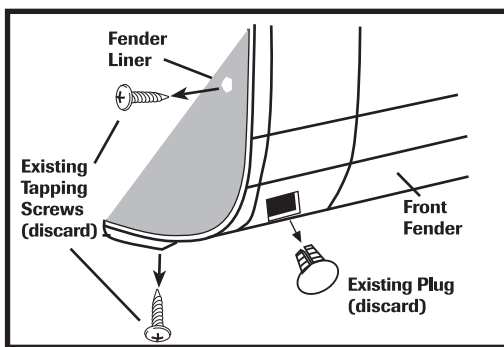
INSTALLATION INSTRUCTIONS - FRONT SPLASH GUARDS

7. INSTALLATION PROCEDURE

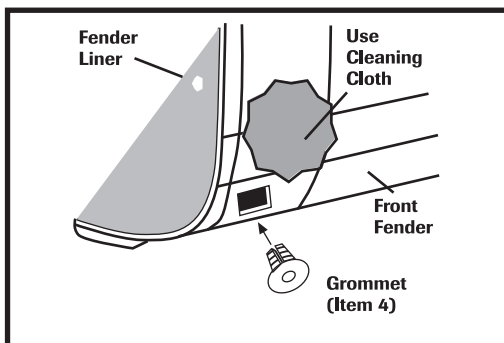
The procedure below shows the installation for the left side. Repeat the same procedure for the right side.

Important

Turn the tire to the left during installation of the left splash guard. (Turn the tire right during right side installation.)

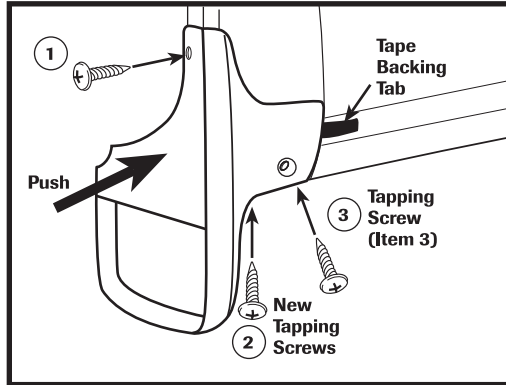


- (1) Wash any dirt and oil off of the installation surface with mild soap and water. Use a 50/50 alcohol/water mixture to further prepare the area.
- (2) Remove existing tapping screws from lower fender lip and underside of fender and discard.
- (3) Remove the existing plug from the underside of the front fender and discard.



- (4) Using the provided cleaning cloth, clean the area where double sided tape will contact the vehicle (shaded area).
- (5) Install the plastic grommet into the square hole exposed in step 3.

INSTALLATION INSTRUCTIONS - FRONT SPLASH GUARDS

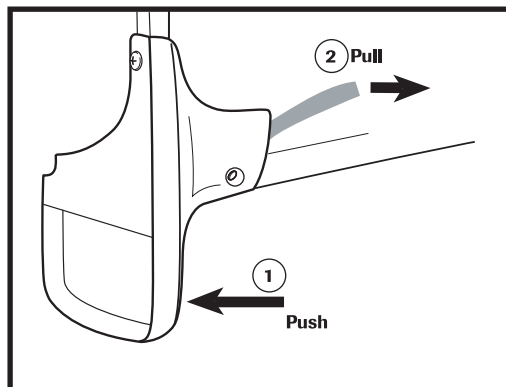


(6) Fold tape backing tab so that edge will be accessible once splash guard is installed.

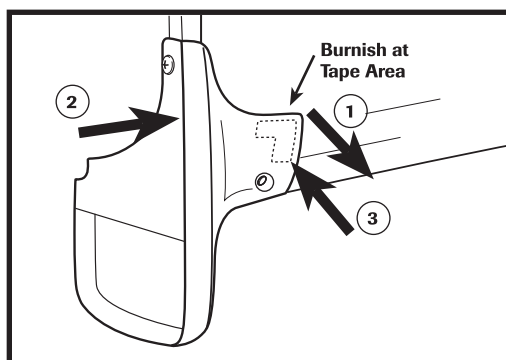
(7) Hold the splash guard in position against the fender so the holes align.

(8) Loosely install the new screws.

(9) Push the splash guard tight to the vehicle at location as shown by the arrow while tightening the screws in the order shown.



(10) Push lightly forward on the bottom of the splash guard. Slowly pull the tape backing tab rearward to remove.



(11) While holding tape away from the vehicle at upper rear corner (1), push the splash guard rearward into correct position as shown by the arrow in illustration (2). Once in proper position, press tape area to vehicle (3).

(12) Use a hand roller or burnish tape area with a minimum of 15 lbs. of pressure to ensure good contact with fender.