



GENUINE PARTS

INSTALLATION INSTRUCTIONS

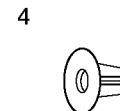
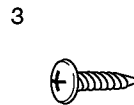
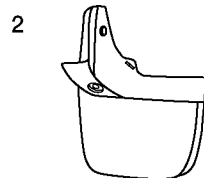
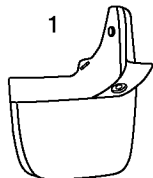
1. DESCRIPTION: Rear Splash Guards (Standard Bed)

2. APPLICATION: Titan

3. PART NUMBERS: 999J2-WQ00004

4. KIT CONTENTS:

<u>Item</u>	<u>Qty.</u>	<u>Part Number</u>	<u>Description</u>
1	1	93820 8S710	Splash Guard Rear (Right)
2	1	93821 8S710	Splash Guard Rear (Left)
3	2	14-51 00841	Screw -Tapping
4	2	12-18 00831	Plastic Grommet
5	1		Cleaning Cloth
6	1		Installation Instructions



5. TOOLS REQUIRED:

#2 90° Phillips Screwdriver • Rag • 50/50 Alcohol/Water Mixture • Hand Roller

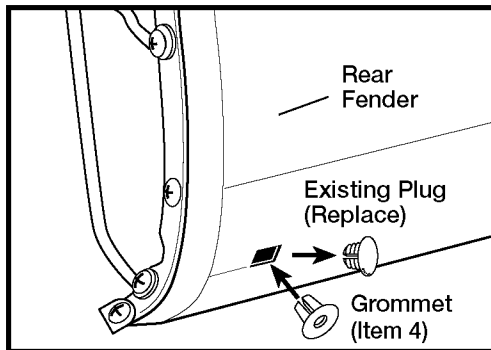
INSTALLATION PRECAUTIONS:

- (A) Be careful not to damage the vehicle and the splash guards during installation.
- (B) The splash guards are made of plastic. Avoid any heavy impact.
- (C) After the installation is complete, make sure all the screws, nuts, bolts and other components are tightened securely.
- (D) Installation surface must be clean.

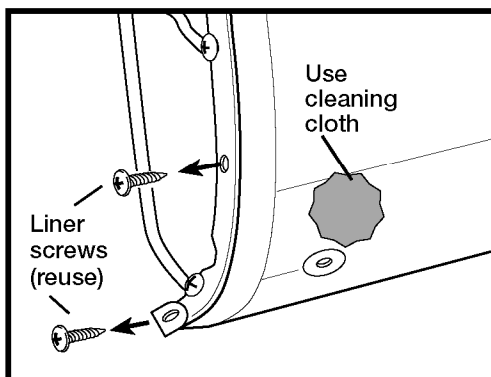
INSTALLATION INSTRUCTIONS - REAR STANDARD BED SPLASH GUARDS

7. INSTALLATION PROCEDURE

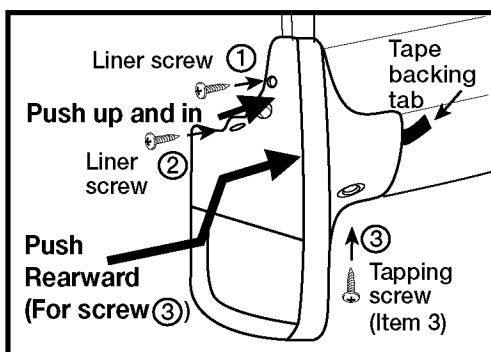
The procedure below shows the installation for the left side. Repeat the same procedure for the right side.



- (1) Wash any dirt and oil off of the installation surface with mild soap and water. Use a 50/50 alcohol-water mixture to further prepare the area.
- (2) Remove the existing plug from the underside of the rear fender and discard.
- (3) Install the plastic grommet into the square hole exposed in step 2.

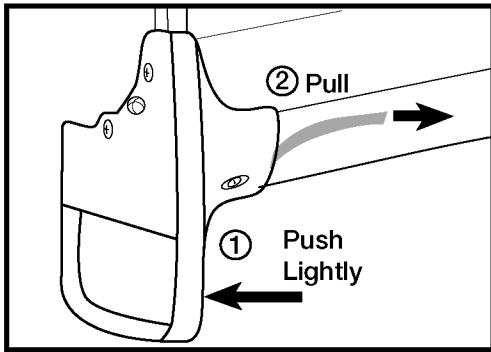


- (4) Remove the liner screws. Keep to reuse.
- (5) Using the provided cleaning cloth, clean the area where double sided tape will contact the vehicle (shaded area).

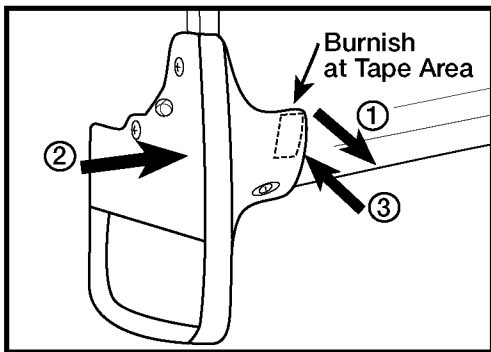


- (6) Fold tape backing tab so that edge will be accessible once splash guard is installed.
- (7) Hold the splash guard in position against the fender so the holes align.
- (8) Loosely install the previously removed screws and the supplied tapping screw in the locations indicated.
- (9) Push the splash guard tight to the vehicle at locations as shown by the arrows in illustration while tightening the screws in the order shown.

INSTALLATION INSTRUCTIONS - REAR STANDARD BED SPLASH GUARDS



- (10) Push lightly forward on the bottom of the splash guard. Slowly pull the tape backing tab rearward to remove.



- (11) While holding tape away from the vehicle at upper rear corner (1), push the splash guard rearward into correct position as shown by the arrow in illustration (2). Once in proper position, press tape area to vehicle (3).

- (12) Use a hand roller or burnish tape area with a minimum of 15 lbs. of pressure to ensure good contact with fender.